

CLEAN WATER
STORE

Clean Water Made Easy

www.cleanwaterstore.com

5900-BT Arsenic Backwash Filter

Installation & Maintenance Guide



Thank you for purchasing a Clean Water System!

With proper installation and a little routine maintenance your system will be providing arsenic-free water for many years.

Please review this manual entirely before beginning to install your system, and follow the steps outlined for best results.


**Minimum 30 PSI required. Maximum pressure 90 PSI.
For indoor installation. Protect from sunlight, rain, and freezing.**

**FILTER MEDIA CONTAINS DUST.
USE PAPER MASK AND VENTILATE TO AVOID BREATHING DUST.**

**IMPORTANT: REGULARLY MONITOR ARSENIC LEVELS BEFORE AND AFTER SYSTEM.
ARSENIC LEVELS CAN CHANGE OVER TIME.**

**USE A HOME TEST KIT TO MONITOR LEVELS
MONTHLY AS WELL AS HAVING YOUR WATER PROFESSIONALLY TESTED FOR ARSENIC
MONTHLY OR QUARTERLY.**

Questions?

 **Call us toll-free:** 1-888-600-5426 or 1-831-462-8500

 **Email us:** support@cleanwaterstore.com

 **See more information on our website:** www.cleanwaterstore.com/resources

Table of Contents

Packing Lists	4
How Your Arsenic Backwash Filter Works	5
System Installation Steps Overview	6
Pre-Installation	6
Best Practices for Piping & Drain Installation	7
Diagram of Installation Well Water	8
Installation of Your System into Copper or Metal Piping Systems	8
Add Filter Media and Install 5900-BT Backwash Valve on Tank	9
Attach the Bypass	10
Piping Installation	11
Program Your Valve: Main Menu	12
Program Your Valve: Master Programming Mode	12
See Historical Data and Real Time Flow Rate	13
Legacy Phone App Dashboard	16
Pressure Loss from Inadequate Backwash Flow Rate	22
Problems with Pressure Loss or Reduced Flow	22
Service Instructions – Perform Before Doing Any Service	22
How to Replace Powerhead	23
How to Replace Piston Assembly	23
How to Replace Seals and Spacers	24
How to Replace Meter	24
How To Replace the Arsenic Filter Media	25
Valve Body Assembly 5900-BT	26
Control Valve Assembly 5900-BT	27
Limited Warranty	28

5900-BT Arsenic Filter Operation Maintenance Guide

Packing Lists

All systems include

5900-BT control valve; bypass assembly with 1" connector yoke; power supply; media funnel for adding the Arsenic Media; top screen.

Find Your Size System to See What is Included

Arsenic Filter 1.0 cubic foot size

9" x 48" filter tank with distributor tube
12 lbs. filter gravel
1 cubic foot of Arsenic Media

Arsenic Filter 2.0 cubic foot size

12" x 52" filter tank with distributor tube
20 lbs. filter gravel
2.0 cubic foot of Arsenic Media

Arsenic Filter 3.0 cubic foot size

14" x 65" filter tank with distributor tube
40 lbs. filter gravel
3.0 cubic foot of Arsenic Media

Arsenic Filter 4.0 cubic foot size

16" x 65" filter tank with distributor tube
50 lbs. filter gravel
4.0 cubic foot of Arsenic Media

What to Do if Your Tank is Not Level Out of the Box

Your black filter tank base is not glued to the bottom of your tank. Occasionally tank bases will become crooked during shipment.

If you find that that your tank does not sit level on the floor, you can easily adjust it by holding the empty tank and rapping it on a concrete or solid floor once or twice to level it.

5900-BT Arsenic Filter Operation Maintenance Guide

How Your Arsenic Backwash Filter Works

Water enters the top of the tank and flows down through the arsenic filter media and up the distributor tube.

The Arsenic Backwash Filter systems use Metsorb HMRG filter media to remove arsenic.

MetSorb HMRG is a highly effective granular adsorbent that removes arsenic III & V, and a wide variety of heavy metals including Lead, Cadmium, Copper, Chromium+6, Selenium, and Zinc from water.

MetSorb adsorbent technology utilizes a patented Titanium compound to adsorb both forms of arsenic as well as a wide range of contaminants in water.

During backwash the flow of water is reversed and water flows down the distributor tube and up through the media, lifting and expanding the Metsorb Media.

During the backwash the Metsorb media is cleaned of sediment by the action of the water flowing through it.

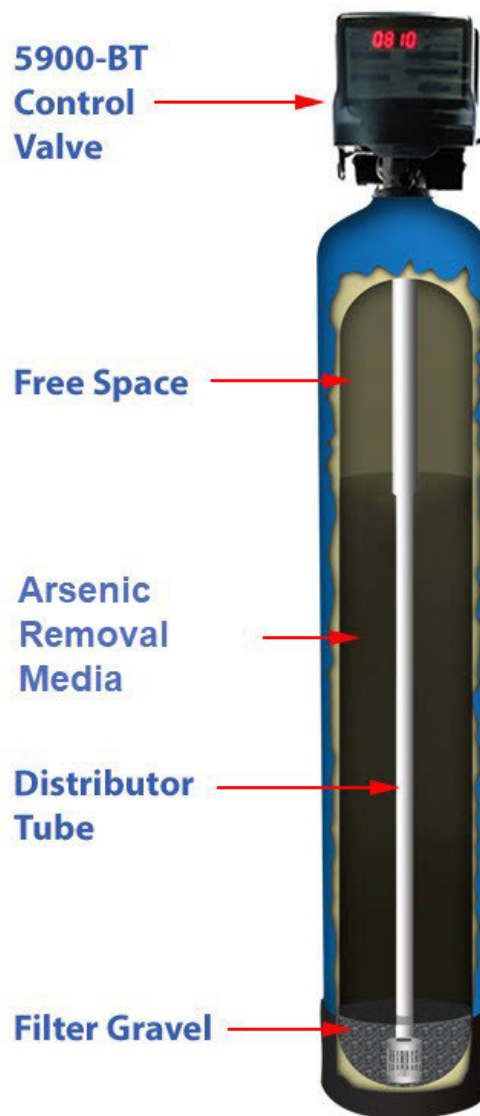


Fig. 1

5900-BT Arsenic Filter Operation Maintenance Guide

System Installation Steps Overview

1. Put gravel in first, then Metsorb Arsenic Media.
2. Make the plumbing connections from your existing system to the bypass assembly, installing extra valves, unions, pressure gauges and hose bibs as needed.
3. Attach the control head to the tank, and to the bypass assembly.
4. Install the drain Line tubing
5. Plug in the power supply and program the valve.
6. Follow the instructions to put the system online and to verify the system is leak-free.

Pre-Installation

1. Review your packing list to make sure you have received all the parts before installation.
2. If you are going to be turning off the water to the house and you have an electric water heater, shut off the power to the water heater before beginning installation.
3. Pick a suitable location for your filter system on a dry level spot where it won't be exposed to freezing temperatures, direct sunlight, wind or rain.
4. Get all of your plumbing parts together before beginning installation.

5900-BT Arsenic Filter Operation Maintenance Guide

Best Practices for Piping & Drain Installation

1. See typical installation (Fig 2). The Arsenic Backwash filter is installed after pressure tank.
2. Install on a level floor or surface.
3. Filter system must be installed at least 10 feet ahead of inlet to water heater to prevent damage due to back-up hot water or use a check valve to prevent hot water back-up.
4. DO NOT install the unit in an area of direct sunlight or expose to freezing.
5. Locate the unit near an unswitched, 120 volt / 60 Hz grounded electrical outlet.
6. Make sure to connect the IN pipe to the 5900-BT inlet and the OUT pipe to the outlet.
7. Make sure there is a working gate or ball valve before the 5900-BT Arsenic Filter and also one after as shown in Fig 2. The pressure gauges are optional. A hose bib (which is a faucet that you can attach a garden hose to) is strongly recommended after the 5900-BT Filter and before the second ball valve, for rinsing and sampling water.
8. If you will be using copper piping, do not sweat the copper pipe directly on to the 5900-BT control valve. Avoid heating up the 5900-BT control valve plastic with the torch.
9. You do not need unions to install your 5900-BT control valve. If you need to remove it, the 5900-BT has quick-release couplings that make it easy to put the filter on by-pass and remove the filter system from the piping.
10. The drain line tubing is connected to a drain from the drain outlet using flexible poly tubing. The drain can run up above the control head and out to a drain, although this may require installing a one way, flapper-style check valve.
- 11. Most plumbing codes require an air-gap connection, so that if your sewer or septic tank backs up, it cannot cross connect with the drain tubing (if running tubing into the washing machine drain pipe, for example)**

5900-BT Arsenic Filter Operation Maintenance Guide

Diagram of Installation Well Water



Installation of Your System into Copper or Metal Piping Systems

If your new filter system is to be installed in a metal (conductive) plumbing system, i.e. copper or galvanized steel pipe, the plastic components (bypass and connectors) will interrupt the electrical continuity of the plumbing system. As a result, any stray currents from improperly grounded appliances downstream or potential galvanic activity in the plumbing system can no longer ground through the contiguous metal plumbing.

Some homes may have been built in accordance with building codes which encouraged the grounding of electrical appliances through the plumbing system.

The installation of a bypass consisting of the same material as the existing plumbing, or a grounded "jumper wire" bridging the equipment and reestablishing the contiguous conductive nature of the plumbing system must be installed prior to your systems use.

This is simple and easy step to take if you are installing your water treatment system into copper piping. A simple ground jumper wire with a pipe clamp can be purchased at any Home Center, or hardware store etc. for a few dollars.

5900-BT Arsenic Filter Operation Maintenance Guide

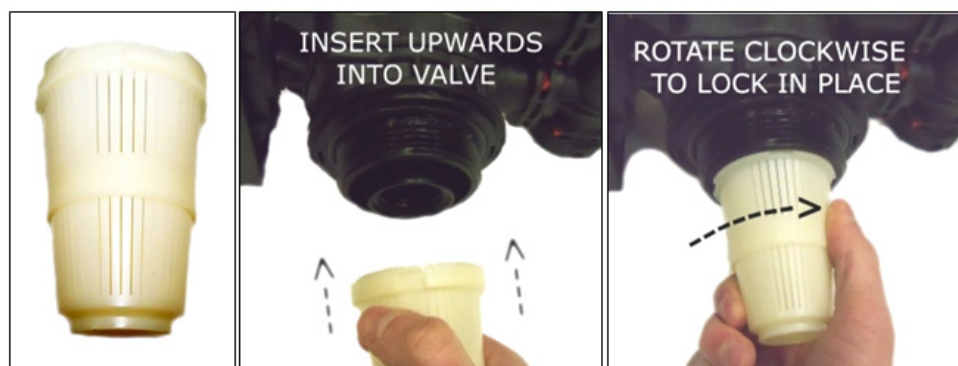
Add Filter Media and Install 5900-BT Backwash Valve on Tank

1. Make sure you “test fit” distributor tube, find divot that keeps tube centered, before adding gravel so distributor tube does not extend past top of tank.
2. There are two styles of funnel that we ship, depending on availability; you get either the blue or black funnel.
3. If blue funnel, cover top of distributor tube with black electrical tape, duct tape or masking tape so no gravel or media will go down distributor tube when adding media.
4. Leave a folded tab of tape so you can easily pull off tape after filling the tank.
5. Hold the tube center until there is enough gravel and media to support the tube. The top of the distributor tube should be level with the top opening of the filter tank.
6. Add the filter gravel that came with your order. The gravel should cover the bottom distributor screen before adding the Metsorb Arsenic filter media.
7. Next add the Metsorb Arsenic Media.
8. The tank should be about 2/3 full of media, do not fill much more than 2/3 full, even if there is media left over. We ship the correct amount of media to fill your tank for most orders.
9. Remove tape from top of distributor tube. Be careful not to pull up distributor tube.
10. Attach plastic top screen to under-side of the 5900-BT control valve. It is a funnel-shaped plastic screen that snaps on to the control valve and prevents resin from being backwashed out to drain during the regeneration cycles. It may twist on clockwise or counter-clockwise.

Make sure top of distributor tube
is level with top of tank



5900-BT Arsenic Filter Operation Maintenance Guide



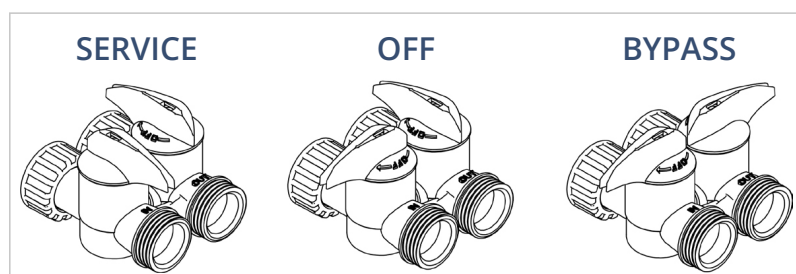
11. Screw on Control Valve: Add small amount of silicone grease to both O-rings (only O-rings, not tank thread) on bottom of control valve and screw on 5900-BT control valve carefully.
12. Do not lubricate tank threads or any other fittings other than O-rings. Do not use pipejoint compound, vegetable oil, Teflon tape, or Vaseline or greases on tank threads.
13. If you accidentally pull distributor tube up after gravel and media are in tank (upon initial install or any time after, for service, etc.), it must be re-seated. It is usually possible to do this by spraying water down distributor tube with a garden hose while pushing on end of the tube. If this does not work, you must empty tank completely and start over.
14. Do not hard pipe the drain line with PVC or copper, use flexible tubing. If you use hard PVC piping for the drain line, you must be able to remove the hard drain piping and attach flexible tubing for testing purposes.
15. Make sure the drain tubing is firmly clamped to the barbed fitting with a hose clamp to prevent leaks or blow-offs.

Attach the Bypass

Make sure there is lubricant on all three sets of O-rings and insert and screw bypass onto end connectors (O-rings are already on valve, with the Inlet Air Check Valve on the left, Inlet side).

Screw the Elbow fittings onto the end of the bypass and attach to service pipe.

Note: There is supposed to be some “play” in the whole assembly. No need to over-tighten or to screw them too tight.



5900-BT Arsenic Filter Operation Maintenance Guide

Piping Installation

1. Using Teflon tape on pipe threads, make sure to connect the IN pipe to inlet and OUT pipe to the outlet. As you face the 5900-BT control from the front, the water enters on the right and exits on the left. From the back the water enters on the left.



2. The inlet and outlet are attached to the bypass valve, which is marked with arrows as well.
3. Make sure there is a hose bib installed after the system, and a working gate or ball valve before filter system and also one after as shown in Fig 2. The pressure gauges are optional but a hose bib is strongly recommended after the 5900-BT control valve and before the second ball valve. This makes it easy to rinse your new system on start-up and gives you a place to test water before it enters your house plumbing.
4. If you will be using copper piping, do not sweat the copper pipe directly on to the 5900-BT control valve. Avoid heating up the control valve with the torch, as the plastic will melt.



5. You do not need unions to install your 5900-BT control valve. If you need to remove it, the 5900-BT control valve has quick-release couplings that make it easy to put the 5900-BT on by-pass and remove the filter system from the piping.
6. The drain line tubing is connected to a drain from drain outlet using flexible tubing. Note that drain line can run up above the 5900-BT control and into a drain.
7. Most plumbing codes require an air-gap connection for the drain line tubing, so that if your sewer or septic tank backs up, it cannot connect with the drain tubing.



5900-BT Arsenic Filter Operation Maintenance Guide

Program Your Valve: Main Menu

1. Remove cover by pulling out front and back tabs slightly and lifting straight up to access control panel.
2. Enter main menu, by pressing the Menu/Enter button once (Time of day will flash)
3. Set current time of day by pressing the Set/Change button (First digit will begin to flash)
4. To change digit value, press the Set/Change button.
5. To accept the digit, press the Menu/Enter button
6. Once the last digit for current time of day is accepted all digits will flash.
7. With all digits flashing next press the Menu Button to set A.M. or P.M.
8. Once A.M./P.M. is accepted the next menu item will flash
9. To Set Number of Days Between Backwash Cycles (A) Press the Set/Change Button and set number of days between cycles. Maximum value is 29. If value is set to 0, no automatic backwash will occur.
10. The recommended initial backwash frequency setting for the Arsenic Backwash Filter is once every 29 days.
11. To exit menu, press the Menu/Enter button



Program Your Valve: Master Programming Mode

1. Regeneration Time (r)

Press the Menu/Enter Button. To enter Master Programming Mode press and hold both buttons for 5 seconds.

The next display viewed is the option setting for Regeneration Time. It is identified by the letter 'r' in the left digit. Set the desired time of day that a regeneration may occur, when required.

We recommend setting the system to backwash at 2 AM, or at any time that it is unlikely that any water will be used.

If you have 2 or more filters, make sure they are programmed to start an hour apart, so they do not backwash at the same time.

5900-BT Arsenic Filter Operation Maintenance Guide

The first digit(s) indicates the Hour and the other digit indicates A.M. or P.M. Example: 12 A.M.
regeneration time - [r 12A] (factory setting)

2. Regeneration Cycle Step Programming Times

The next 3 displays viewed are part of a series of option settings used to program the Regeneration Cycle which is where the filter backwashes and rinses itself. Up to 3 steps can be programmed and they are: Backwash, Rest, and Rapid Rinse.

Each display is used to set the duration time in minutes for that specific step in a regeneration cycle. Regeneration steps are skipped by setting the display to 0 as shown below:

Set each step according to the values below, appropriate for a 5900-BT filter system:

1. 10 minutes. This is the BACKWASH cycle. [1 - 6] (Set for 6 minutes)
2. 0 minutes. This is the REST cycle. [2 - 0]
3. 6 minutes. This is the RAPID RINSE cycle. [3 - 06]
4. Next step will be "bE 1". If you are using the Bluetooth Legacy App, the 01 means that it's ready.
5. Next and final step is bbPP is displayed for one second, then password is displayed.

Press the menu/enter button, and now you are back to the home service screen (displaying the clock time and the number of days until backwash). bE is for Bluetooth enabled.

See Historical Data and Real Time Flow Rate

Pressing and holding the Menu/Enter button will also access some options:

Flo - This is the flow rate, if water is running, it will display the volume, in gallons per minute.

Gt r - This the total # of gallons that has gone through the filter.

g tot - This is the same as the previous.

rC r - Number of regeneration done.

rC - The same.

gPdL - shows how many gallons used each day.

Gbrl - Is the gallons used between regenerations.

PfDL - This shows the peak, or highest flow rate that has passed through the filter in the last 24 hours.

If you "get stuck" in these options, keep pressing the Menu/Enter button until you have returned to the service screen.

5900-BT Arsenic Filter Operation Maintenance Guide

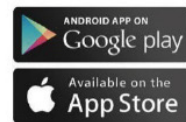
Detailed Steps to Starting Up Arsenic Backwash Filter System

1. Arsenic filter media has a lot of gray fines or dust, and must be rinsed free by backwashing and rinse, which may take several backwashes.
2. MAKE SURE THE SOURCE WATER ENTERS THE INLET PIPING (IN OTHER WORDS, THAT THE SYSTEM IS PIPED IN CORRECTLY, WITH THE WATER INLET TO THE INLET ON THE BYPASS VALVE)
3. MAKE SURE THAT BOTH THE INLET AND OUTLET BYPASS VALVES ARE CLOSED INITIALLY
4. MAKE SURE TO CLOSE THE BALL VALVE OR GATE VALVE AFTER THE FILTER SO NO WATER CAN ENTER THE HOME DURING THIS INITIAL BACKWASH. (If you did not install a hose bib and gate or ball valve after the system as recommended, be sure to NOT use any water in the home during the initial start-up.)
5. If you have any filters or softeners installed after the filter system, bypass them until all media fines have been rinsed.
6. First, if days remaining is not already at 1, press and hold the Set/Change button.
7. Next press and hold the Set/Change button, until the valve begins the backwash cycle and the display reads 1 [1- 10]. This is the first cycle that starts a backwash.
8. Start to put the valve into the service position by turning the inlet bypass knob counterclockwise about a quarter inch, until you can hear water passing through the bypass into the filter. Stop and wait until you see water coming out of the drain line. It will often be mixed with air bubbles.
9. When you do not see bubbles anymore, keep opening the valve, a little bit at a time, stopping for a minute or two each time. You want to see a corresponding increase in flow out of the drain line as you increase the flow of water into the filter.
10. After several minutes, you should have the valve fully open, and with no media coming out.
11. NOTE: To skip to the next cycle or fast forward past Rest or other cycles, hold down Set/Change button for 3 seconds.
12. Let the unit do the Rapid Rinse cycle and advance to the "Service" position.
13. Repeat Step 1 and start up another backwash, rinse sequence. You may need to backwash the filter 2 or 3 times to thoroughly clean up the filter media.

5900-BT Arsenic Filter Operation Maintenance Guide

14. Next, open the outlet on the bypass valve and then open the hose bib after the system and allow the water to run until it is clear. Run water in the home using a bathtub, laundry sink, or other fixture that does not have an aerator screen as any remaining residue may get caught in the screen. Run the water in the home for 5 to 10 minutes to flush pipes.

**CONGRATULATIONS,
YOU ARE DONE STARTING UP YOUR FILTER SYSTEM!**



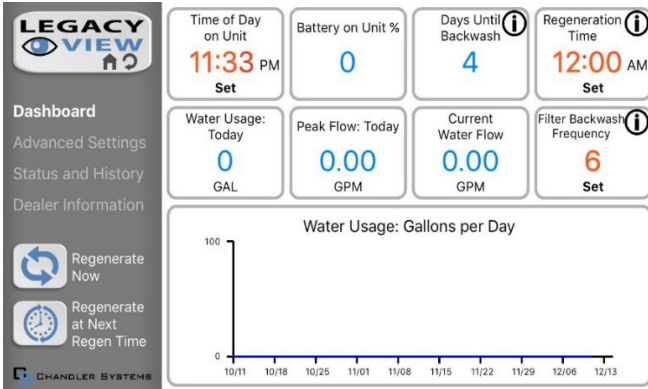
Installing and Using the Optional Blue Tooth Legacy View App

For simplified set up and control, please install the Legacy View on a compatible Bluetooth 4.0+ enabled smart phone or tablet.

1. Download and install the Legacy View app from the Google Play Store, Apple App Store.
2. Open the Legacy View app
3. Choose a valve device at any time from the list of available devices to connect to by clicking on it (which means your 5900-BT control valve, or valves if you have more than one system)
4. If the valve you want to connect to doesn't show up, or there is a problem connecting press the "Scan for Devices" button or the Legacy View logo at any time to refresh the list and start the process over.
5. If the valve device is a BTLE valve and it has a password other than the default password, the first time you connect to it the app will ask you to enter the password.
6. After entering it the first time you should not need to enter it again unless it changes.
7. The control valve firmware can be updated by the App. When the app is updated from the Google Play Store or the Apple App Store, it may contain an updated firmware program for the valve devices.
8. These updates could contain new features or operational improvements. It is up to the user to allow these updates to be sent to the valve device. Uploading a new program takes approximately 1 minute.

5900-BT Arsenic Filter Operation Maintenance Guide

Legacy Phone App Dashboard

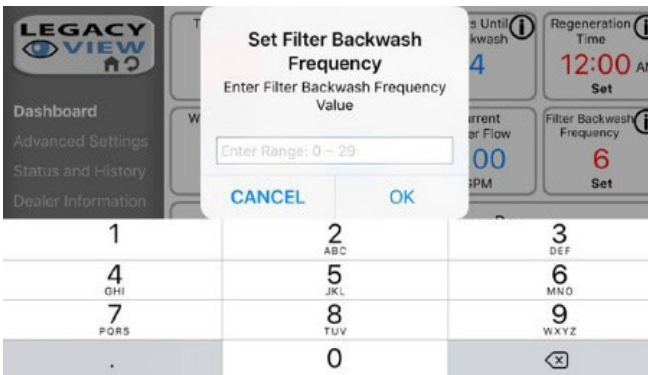


From the Dashboard, all items in **ORANGE** can be changed, while blue fields are informational only.

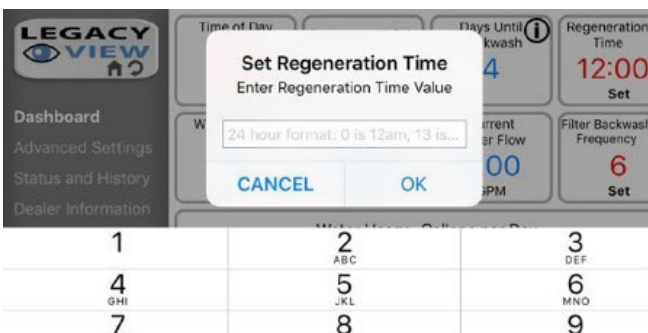
If you are unsure about the function of the field, click the Info icon for more information



1. Change Time of day (Press "set" to set time automatically based on device time)



2. Set Backwash Frequency. This sets the amount of days between backwash cycles.



3. Set Regeneration Time. Example: For 2am, just type 2 and press OK.

5900-BT Arsenic Filter Operation Maintenance Guide

Legacy App Advanced Settings

From the Advanced Settings, all items in **ORANGE** with a “set” button can be changed.

LEGACY VIEW

Dashboard
Advanced Settings
Status and History
Dealer Information

Regenerate Now
Regenerate at Next Regen Time

CHANDLER SYSTEMS

Air Recharge Frequency
4
Set

Cycle Position Times

Air Release 1 min. Set
Backwash 10 min. Set
Rest 5 min. Set
Air Draw 20 min. Set

Rapid Rinse 5 min. Set

Touch any table to explode a detailed list of the last 60 days.

Status and History Using Legacy View App

From the Status and History, all items in **ORANGE** can be reset.

LEGACY VIEW

Dashboard
Advanced Settings
Status and History
Dealer Information

Regenerate Now
Regenerate at Next Regen Time

CHANDLER SYSTEMS

Current Water Flow
0.00
GPM

Total Gallons
Total Treated: 0
Total Treated Since Last Reset: 0
Reset

Regeneration Counters
Total: 47,873
Total Since Last Reset: 68
Reset

Water Usage: Gallons Per Day
Touch for Log Details

Water Usage: Gallons Between Regenerations
Touch for Log Details

Peak Flow Recorded Per Day
Touch for Log Details

5900-BT Arsenic Filter Operation Maintenance Guide

Start a regeneration or backwash cycle



Option 1: Click on "Regenerate Unit Now."



If you would like to force the unit into the next cycle step, Click "Go to next Regeneration Step."



Option 2: "Regenerate Unit at next Regen Time" button. This will take the system into a backwash at the next regeneration time.

Filter System Normal Operation

- Normal display alternates between time of day and days until regeneration.
- Days remaining until the next regeneration will count down from the regeneration day override value to 1 day remaining.
- Once count reaches 1, a regeneration will be initiated at next scheduled regen time.

Battery Back-up (9 Volt Battery Required)

1. Attach a 9v battery (not supplied) to its cable. Battery lays on bottom plate of valve, below circuit board assembly. **DO NOT INSTALL BATTERY UNTIL AFTER INITIAL BACKWASH!**
2. The purpose of the battery is to hold the clock time during a power outage (all other values are stored on the circuit board) and to advance the valve to a cycle step that will not allow water to run to drain, if the power failure occurs during a backwash cycle. If this event happens, replace the battery afterwards

5900-BT Arsenic Filter Operation Maintenance Guide

How to Start A Manual Backwash

1. If days remaining is not already at 1 press and hold the Set/Change button.
2. After 7 seconds the days remaining display will read: [1]
3. With days remaining at 1 press and hold the Set/Change button again.
4. After 5 seconds the regeneration cycle will begin.
5. Fast Cycling Through each Step
6. First complete above immediate cycle steps
7. Press and hold the Set/Change button
8. After 3 seconds the valve will start to advance to the next step

Arsenic Filter Maintenance

No weekly or monthly maintenance is required. If your water is extremely high in hardness, Arsenic or grit, you may need to replace the piston, seals and spacers every 1 to 5 years. Test for arsenic before and after filter regularly.

The Arsenic filter media typically lasts 2 to 6 years. If you start to notice Arsenic coming through or pressure loss after the filter system, dump out and replace the filter media.

5900-BT Arsenic Filter Operation Maintenance Guide

Troubleshooting Chart

SYMPTOM	PROBABLE CAUSE	CORRECTION
1. Fails to Regenerate Automatically	Power supply plugged into intermittent or dead power source	Connect to constant power source
	Improper control valve programming	Reset program settings
	Defective power supply	Replace power supply
	Defective Drive motor	Replace motor
2. Regeneration at Wrong Time	Time of day improperly set, due to power failure	Reset time of day programming and install 9-volt battery.
	Regeneration time set improperly	Reset regeneration time programming
3. Poor Water Quality	Check items listed in #1 and #2	
	Bypass valve open	Close bypass valve.
	Channeling	Check for too slow or high service flow. Check for media fouling.
	Lack of aeration in water	Program valve to draw air more frequently. Increase number of minutes in air draw cycle. Clean injection assembly and screen (instructions on page 13).
4. Loss of Water Pressure	Scaling / fouling of inlet pipe	Clean or replace pipeline. Pretreat to prevent.
	Fouled media	Clean media. Pretreat to prevent.
	Improper backwash setting	Backwash more frequently
5. Continuous Flow To Drain	Foreign material in control	Clean valve and replace pistons and seals.
	Internal control leak	Same as above.
	Valve jammed in backwash or rapid rinse position	Same as above.
	Motor stopped or jammed	Check for jammed piston. Replace piston and seals. Replace motor if motor is unresponsive.
6. Media in Service Line	Plumbed in backward	Re-plumb the system properly
	Internal leak in unit	Call dealer.
7. Media Flows to Drain	Media did not soak long enough	Re-soak the media for a longer length.
	Incorrect or missing drain flow control	Check for proper flow control (reference no. 5 on page 9). Call dealer, if problems persist.

How to Remove Media Accidentally Stuck in Control Head

Sometimes, when doing the Initial Backwash and Start-Up only, the media can get lifted into the control head.

You can tell this has happened because you will have little or no flow, either going out to drain while in the backwash position, or when in the service position.

1. Put the Inlet Bypass in the Closed position.
2. From Service Mode, initiate a manual regeneration, by pressing and holding regen button.
3. The valve will advance to the BW (backwash) position and start counting down. Press the Regen button again and wait for the valve to advance and stop at the Rapid Rinse (RR) position.
4. With the valve in the RR position, open and close the Inlet Bypass valve several times.
5. With the Inlet Valve OFF, Advance the valve back to Service position again, and again press and hold the Regen button, we are putting the valve back to the Backwash position.
6. Open the Inlet valve just enough so you can hear the water passing thru the valve- you should notice a corresponding slow flow out of the drain line.

Any time that you are in the Backwash or Rapid Rinse position, you may unplug the power, and this will hold the valve in its current position, so it doesn't 'time out' and go to next position. When you plug the valve back in, after a minute it will return to where it was when you unplugged it (i.e. 2:32 remaining in BW).

It is not possible to jam media into the head while in Rapid Rinse, or Service, just in the Backwash, when the flow direction is reversed and only during initial start-up.

What you are trying to accomplish, after you have pushed the media back in to the tank in the Rapid Rinse position, is to get the Inlet valve all the way open in the Backwash position, without it jamming media back in the head. Once it does that successfully, you are done.

Error Codes

There are five (5) error codes that could indicate a possible problem with the control valve:

Error 2 - Homing slot expected. Valve will start looking for home. (Normal operation continues)

Error 3 - Encoder is not sending a signal (Either encoder chip has failed, or is not connected)

Error 4 - Unable to find homing slot (Usually because encoder chip has failed)

Error 5 - Motor overload (stalled position or shorted motor, valve requires service to continue)

Error 6 - Motor not getting power (usually means cable has disconnected from circuit board.)

5900-BT Arsenic Filter Operation Maintenance Guide

Pressure Loss from Inadequate Backwash Flow Rate

One problem that may occur is if you do not have enough backwash flow rate to properly clean the Arsenic filter media, particularly if you are on well water and have very low flow and pressure (not usual).

“Flow Rate” is simply how many gallons will flow in one minute, out the drain tubing. If the system is in a backwash and flowing, if it fills a 5-gallon bucket in one minute, it is “5 GPM”

You can verify the backwash flow rate by running the drain line into a bucket and timing it when the 5900-BT control is in backwash.

Problems with Pressure Loss or Reduced Flow

1. First make sure that the problem is the 5900-BT Filter and not another cause. Check the flow rate out of a faucet, with the 5900-BT control valve on by-pass.
2. Greater flow and pressure when the unit is on bypass means the problem is in the filter. No change would indicate the problem is before the filter.
3. The valve: Over time, deposits can build up on the inside of the valve, and prevent the piston from moving, or fully advancing to where it needs to be, and this can affect the flow. The solution is to replace the seals and spacers, clean the valve where you removed the parts, clean and inspect the piston, and re-install.
4. The filter media: As is already noted in the guide, backwash must be done with sufficient flow rate and be backwashed frequently enough to keep the filter media clean.
5. Mud-ball formation: If your water has high levels of Arsenic, silts, or clay getting into the filter, over time these elements combine to form balls which will ruin filter performance. If multiple backwashes do not recover the media, take the control head off & inspect media.

Service Instructions – Perform Before Doing Any Service

- A1. Turn off water supply to filter and put it in the bypass position.
- A2. Remove cover and relieve water pressure in the 5900-BT control valve by stepping the control into the backwash position momentarily. Return the control to the service position.
- A3. Unplug electrical cord from outlet.

5900-BT Arsenic Filter Operation Maintenance Guide

How to Replace Powerhead

- B1. Remove the control valve cover and disconnect the power supply.
- B2. Disconnect meter cable from circuit board, feed through control (if meter is being re-used)
- B3. Remove lower back base screws and detach lower back base.
- B4. Remove screw and washer at drive yoke.
- B5. Remove powerhead mounting screws.
- B6. The entire powerhead assembly will now lift off easily.
- B7. Put new powerhead on top of the valve. Be sure the drive pin on main gear engages slot in drive yoke (wide side of drive yoke upright must face to the left away from the motor).
- B8. Replace powerhead mounting screws. Replace screw and washer at drive yoke.
- B9. Reattach lower back base.
- B10. Reconnect meter signal, wire and power supply.
- B11. Reinstall cover.

How to Replace Piston Assembly

- C1. Follow steps A1 - A3
- C2. Disconnect the meter signal wire from the circuit board.
- C3. Remove lower back base screws and detach lower back base.
- C4. Remove screw and washer at piston drive yoke. Remove powerhead mounting screws. The entire powerhead assembly will now lift off easily.
- C5. Remove piston retaining plate screws.
- C6. Pull upward on end of piston yoke until assembly is out of valve.
- C7. Inspect the inside of the valve to make sure that there is no foreign matter that would interfere with the valve operation.
- C8. Install new seals and spacers.
- C9. Take new piston assembly and push piston into valve by means of the end plug.
- C10. Twist drive yoke carefully in a clockwise direction to properly align it with drive gear.

5900-BT Arsenic Filter Operation Maintenance Guide

C11. Reinstall piston retaining plate screws.

C12. Follow steps B5 - B9

How to Replace Seals and Spacers

D1. Follow steps A1 - A3.

D2. Disconnect the meter signal wire from the circuit board.

D3. Remove screw and washer at piston drive yoke. Remove powerhead mounting screws. The entire powerhead assembly will now lift off easily. Remove piston retaining plate screws.

D4. Pull upward on end of piston rod yoke until assembly is out of valve. Remove seals and spacers. (Note: Special end spacer must be reused)

D5. Lubricate new seals with silicone lubricant included in the seal and spacer kit. Make sure the special end spacer is properly seated in the valve body.

Install new seals and spacers individually, pressing around the outer edge of each seal to make sure it is seated. (When all seals and spacers are seated properly, you will have a 1/4" of space between the top seal the top of the valve body)

D6. Follow Steps C9 to C10.

How to Replace Meter

E1. Follow steps A1 - A3

E2. Unplug meter cable from front of circuit board.

E3. Unscrew meter assembly nut from valve body.

E4. Remove meter from valve body and clean or replace as necessary.

E5. Reinstall meter, nut and cable.

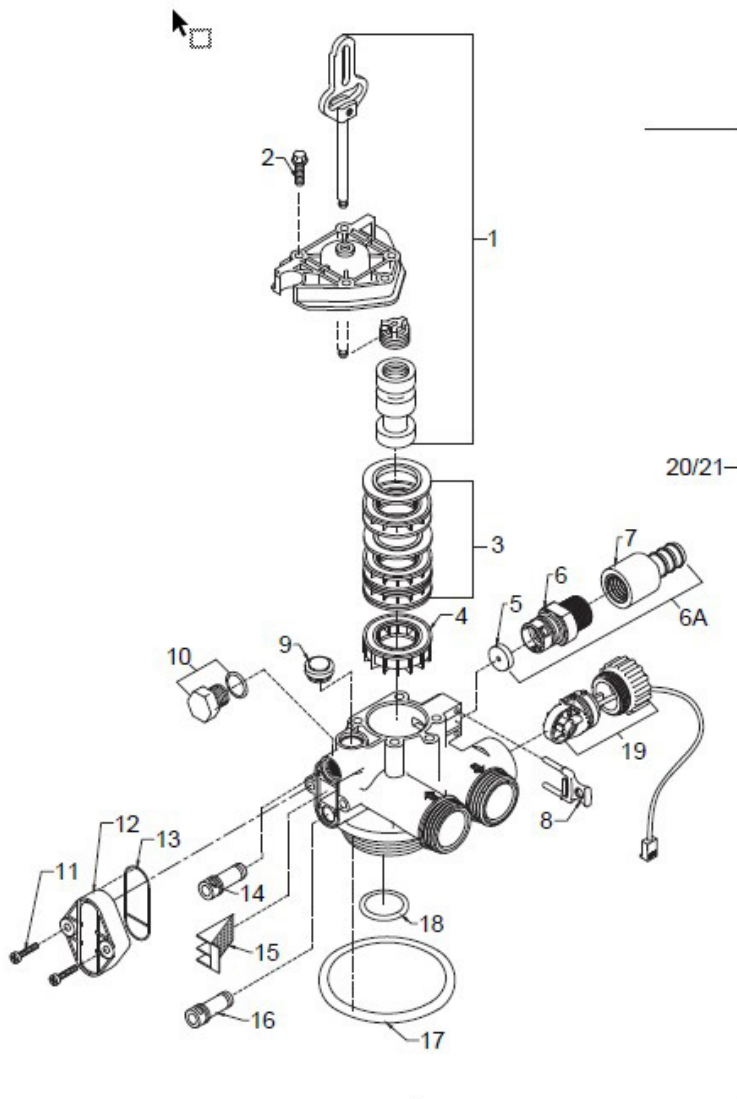
5900-BT Arsenic Filter Operation Maintenance Guide

How To Replace the Arsenic Filter Media

1. Typically, after 2 to 6 years the Arsenic Media will stop removing Arsenic efficiently and needs to be replaced. To accomplish this:
2. Turn water to system and depressurize the filter by opening a hose bib or faucet after the Arsenic backwash filter system.
3. Put system on bypass and remove the union fittings between the bypass valve and the 5900-BT control valve.
4. Unscrew the control valve and set aside.
5. Siphon water out of the Arsenic filter by inserting a small flexible tube down the distributor tube and siphoning out the water.
6. Lay down a clean tarp outside or somewhere you can flush water and clean the tank out.
7. Insert a garden hose in the tank and allow water to flow down center distributor tube. Arsenic Media will begin to flow out on to the tarp.
8. Flush out all Arsenic Media and gravel and discard to landfill or trash. Observe all local laws and codes, generally it is acceptable to dispose of the media in a landfill.
9. Rinse out filter tank until clean.
10. Add a ½ cup of household bleach and a few gallons of water and rinse inside of tank with chlorinated solution.
11. Rinse out filter tank until chlorine is gone.
12. Add gravel and new Arsenic media and re-start up system following original directions in this manual.

5900-BT Arsenic Filter Operation Maintenance Guide

Valve Body Assembly 5900-BT

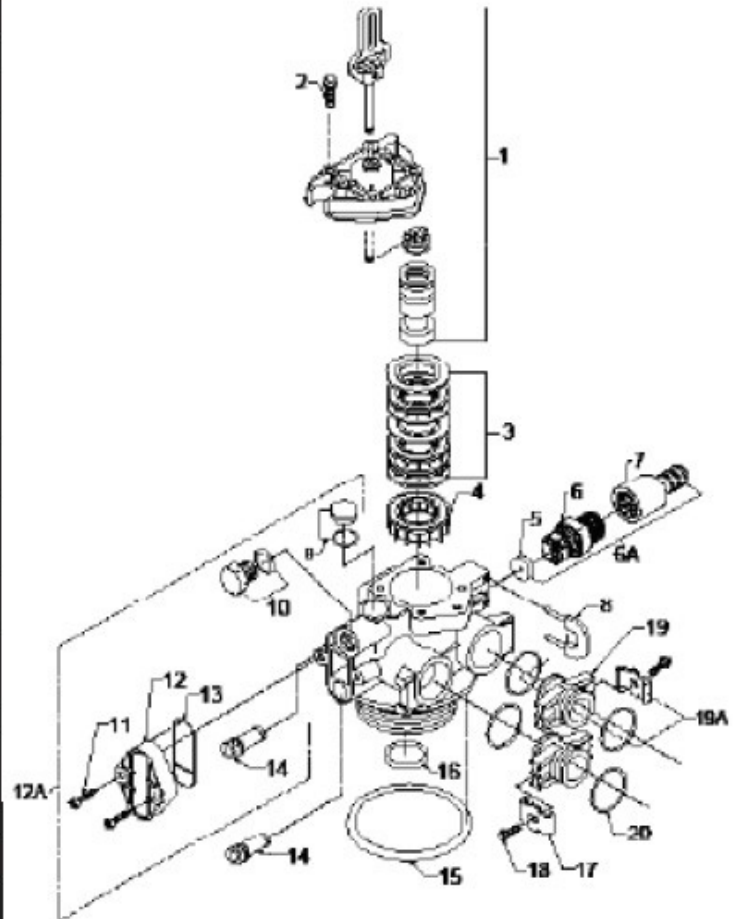


Ref #	Description	Part #	Qty.
1	Piston Assembly	20001X231	1
2	10-24 X 13/16" Screw	20001X226	3
3	Seal and Spacer Kit Incl (5) #3 & (4) #4	20561X253	1
4	End Spacer	N/S	1
5	Flow Control Button 5.0 GPM	20251X272	1
	Flow Control Button 6.0 GPM	20251X274	1
	Flow Control Button 7.0 GPM	20251X273	1
6	Plastic Flow Control Housing	20017X100	1
6A	Flow Control Assembly-Specify GPM Incl. (1) each #5, #6, #7		
	Flow Control Assy. 5.0 GPM-PVC	20017X262	1
	Flow Control Assy. 6.0 GPM-PVC	20017X263	1
	Flow Control Assy. 7.0 GPM-PVC	20017X264	1
8	Drain Retainer	20017X254	1
9	O Ring & Brine Valve Cap Assembly	20001X230	1
10	O Ring & Filter Plug Assembly	20001X229	1
11	10-24 X 1 Screw	20001X226	1
12	Injector Cap	20001X223	1
12A	Filter Conversion Kit Incl. (1) each #9, #10, #12, #13, #14 & (2) #11	20001X221	1
13	Injector Seal	20001X224	1
14	Injector Plug & O Ring Assembly	20001X217	1
15	Screen	20001x222	1
16	Injector Plug & O Ring Assembly	20001X217	1
17	Valve O-Ring	20001x215	1
18	Dist. O-Ring	20561X204	1
19	Meter Assembly	20017X203	1
20	Valve Body Assembly	VH2-B-D15	1

5900-BT Arsenic Filter Operation Maintenance Guide

Control Valve Assembly 5900-BT

Ref #	Description	Part #	Qty.
1	Piston Assembly	20001X231	1
2	10-24 X 13/16" Screw	20001X226	3
3	Seal and Spacer Kit Incl (5) #3 & (4) #4	20561X253	1
4	End Spacer	N/S	1
5	Flow Control Button 5.0 GPM	20251X272	1
	Flow Control Button 6.0 GPM	20251X274	1
	Flow Control Button 7.0 GPM	20251X273	1
6	Plastic Flow Control Housing	20017X100	1
6A	Flow Control Assembly-Specify GPM Incl. (1) each #5, #6, #7		
	Flow Control Assy. 5.0 GPM-PVC	20017X262	1
	Flow Control Assy. 6.0 GPM-PVC	20017X263	1
	Flow Control Assy. 7.0 GPM-PVC	20017X264	1
7	Drain Line Fitting 1/2" NPT X 1/2"	20017X235	1
8	Drain Retainer	20017X214	1
9	O Ring & Brine Valve Cap Assembly	20001X230	1
10	O Ring & Filter Plug Assembly	20001X229	1
11	10-24 X 1 Screw	20001X226	1
12	Injector Cap	20001X223	1
12A	Filter Conversion Kit Incl. (1) each #9, #10, #12, #13, #14 & (2) #11	20001X221	1
13	Injector Seal	20001X224	1
14	Injector Plug & O Ring Assembly	20001X217	1
15	Valve O Ring	20561X205	1



5900-BT Arsenic Filter Operation Maintenance Guide

Limited Warranty

We warrant this water filter/ softener/ conditioner, when installed according to factory recommendations, to be free from defects in materials and workmanship as follows:

Limited Warranty

This water conditioner unit is comprised of the finest industry components available. Each individual component used in the assembly of our equipment is covered by the original equipment manufacturer's warranty. All components, except those specifically listed below, are warranted for a period of one (1) year from date of installation to the original purchaser to be free of defects in materials and workmanship subject to the manufacturer's conditions and/or the conditions shown below.

Mineral Tanks

The fiberglass, polyglass or composite mineral tanks used in the assembly of this unit are warranted to be free of defects in materials and workmanship for a period of ten (10) years on 6" – 13" size tanks, and five (5) years on 14" and larger size tanks used for softener/filtration applications, subject to the manufacturer's conditions and/or the conditions shown below. Warranty does not cover exposure to weather, freezing, fractures caused by external impact, or exposure to vacuum.

Control Valves

The CWS control valve is warranted to be free of defects in materials and workmanship for a period of seven (7) years, subject to the manufacturer's conditions and/or the conditions shown below. Fleck & other brand control valves have 5-year warranty.

Conditions

1. This warranty only covers water conditioners installed for residential use. Water conditioners installed for commercial or industrial applications are guaranteed for one (1) year from the date of installation.
2. Installation must be made in accordance with legal or local codes and manufacturer's recommendations.
3. Failure must not result from exposure to weather, rodents, misuse, alteration, fire, lightning, power surges or neglect.
4. Water pressure must not exceed 100 PSI and water temperature must not exceed 100 degrees.
5. Subject to the above terms and conditions we will replace and/or repair, at our option, any parts of the water conditioner found defective in materials and workmanship. Defective parts must be returned, freight pre-paid for repair or replacement.
6. This warranty does not cover labor, shipping charges, damages caused by delays of consequential damages or other causes beyond our control. Warranty does not cover water quality, arsenic levels pipes, fixtures or appliances. Warranty extends to the actual water conditioner components only.
7. This warranty is to the original purchaser and is not transferable after the third year to any subsequent owner(s).
8. No other guarantees or warranty, expressed or implied, is applicable to our product. No repair or replacement made under the terms of the warranty shall extend this warranty.