

C4447c

SOLENOID NO. C4LM1150 (SKINNER)

ALL PORTS 1/8" N.P.T. PORT DIA. .046"

VALVE BODY- BRASS INTERNALS- S.S. & VITON A.

MAX. PRESS. 150 PSI (10.20 ATM)

MAX. TEMP. 180°F (82.2°C)

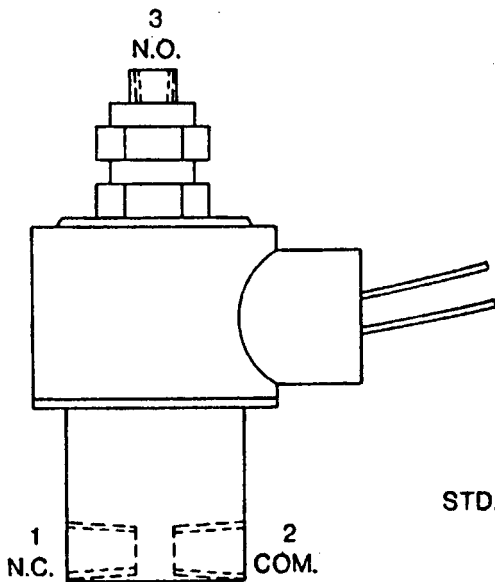
HEAT RISE 185°F (85°C)

POWER CONSUMPTION 7.5 WATTS.

CLASS B MOLDED COIL. WATER PROOF.

CONTINUOUS DUTY.

NEMA 1 HOUSING 1/2" CONDUIT.



COIL NOS.

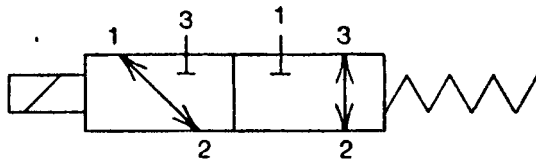
STD. → 120V. 60HZ.	CC-7733F24	12 V.D.C.	CC-7728F24
24V. 60HZ.	CC-7723F24	24 V.D.C.	CC-7731F24
12V. 60HZ.	CC-7726F24	220V. 50HZ.	CC-L237F24

ENERGIZED FLOW FROM 1 ↔ 2
DEENERGIZED FLOW FROM 3 ↔ 2

60 HZ. HOLDING 16. INRUSH 25.

D.C. HOLDING 7.

TO FIND APPROX. HOLDING OR INRUSH CURRENT
IN AMPERES DIVIDE VOLTAGE INTO ABOVE VALUE.



ANSI SYMBOL

AquaMatic INC.

ROCKFORD, ILLINOIS

3 WAY SOLENOID VALVE
MULTI-PURPOSE

DWN BY MM/VP DATE 12-27-78 DWG. 11268-Z