

Contact Column Assembly & Installation Instructions

SPECIFICATIONS-

6" Schedule 80 Base, Flanges and Unions with 6" Clear PVC Column

Installation Area: 8" wide x 80" high

Minimum Flow rate: 65 GPM, Maximum Flow rate: 110 GPM

INSTALLATION OF CONTACT COLUMN-

1. Unpack parts and inspect for possible shipping damage. Parts should include:
 - Clear PVC Column
 - Schedule 80 Base Assembly with Unions and Flanges
 - Internal Upright Column (2" diameter)
 - Slotted Diffuser Column Section (2" diameter)
 - Parts Bag (8 Bolts, 8 Nuts, 16 Washers, 1 gasket)
 - Vent Line Kit
2. The contact column should be installed within three (3) feet of a wall or solid mounting surface using isolation valves to facilitate cleaning the diffuser, if needed.
3. Using PVC primer and PVC cement, glue the internal upright column into the internal elbow **inside** the Schedule 80 base assembly.
4. Thread the slotted diffuser section into the 2" adapter on the internal upright column.
5. Slide the gasket over the internal upright column and center the gasket within the holes in the Schedule 80 base assembly.
6. Slide the clear PVC column over the internal upright column and align the holes with the holes in the Schedule 80 base assembly.
7. Install a bolt and washer through each of the eight holes in the base of the clear PVC column and the Schedule 80 base. Place a washer over the threaded end of each bolt and thread a nut onto each bolt. **Note:** Make sure there is a washer on each side of the flange.
8. Using $1\frac{1}{8}$ " wrenches, tighten each nut firmly and evenly. Tighten the nuts in a diagonal "criss-cross" pattern until all are tight.
9. Secure the column firmly to a wall or other upright support. If purchased with the optional mounting kit, follow the directions on the other side of this sheet.

INSTALLATION OF VENT LINE-

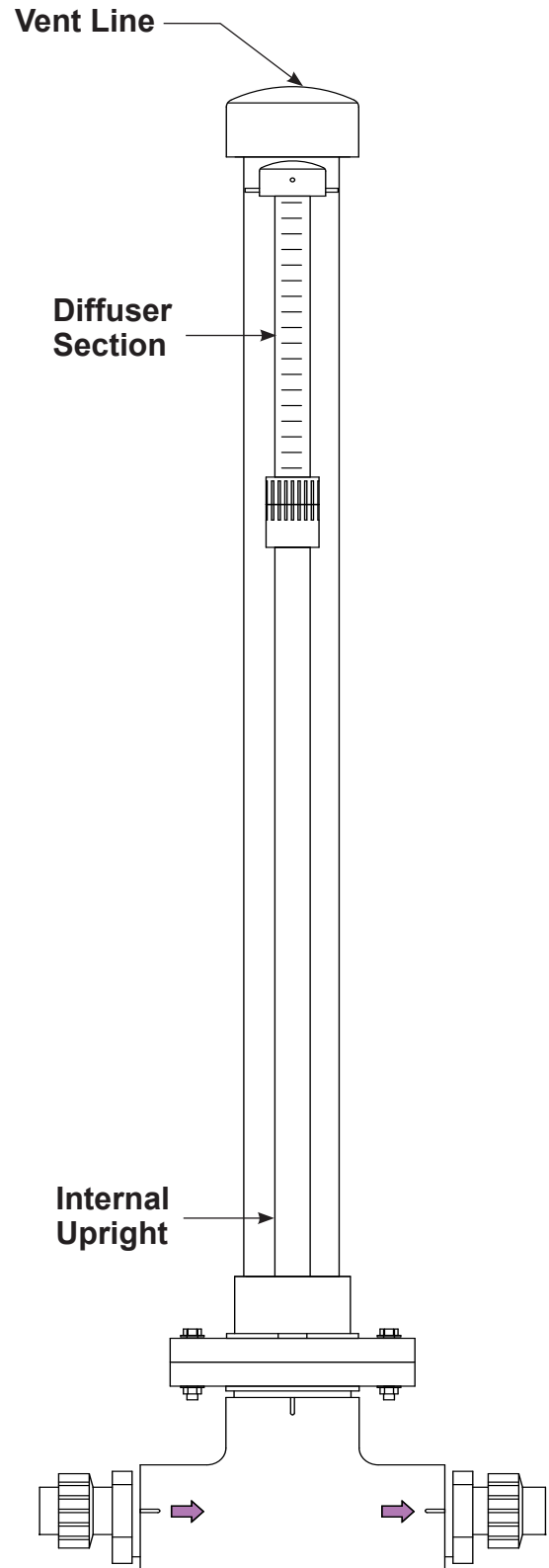
1. Drill and tap a $\frac{1}{8}$ " MPT hole into the underside of the main water line. This hole should be drilled into a location with less pressure than the ozone loop so that the contact column will continually bleed ozone gas build-up on top of the column to be mixed back into the main water line.
2. Install the Teflon® vent line from the Kynar® fitting on the top of the contact column to the location drilled into the main water line.

* VSI offers an Optional Off Gas Destruct unit to eliminate excess ozone gas.

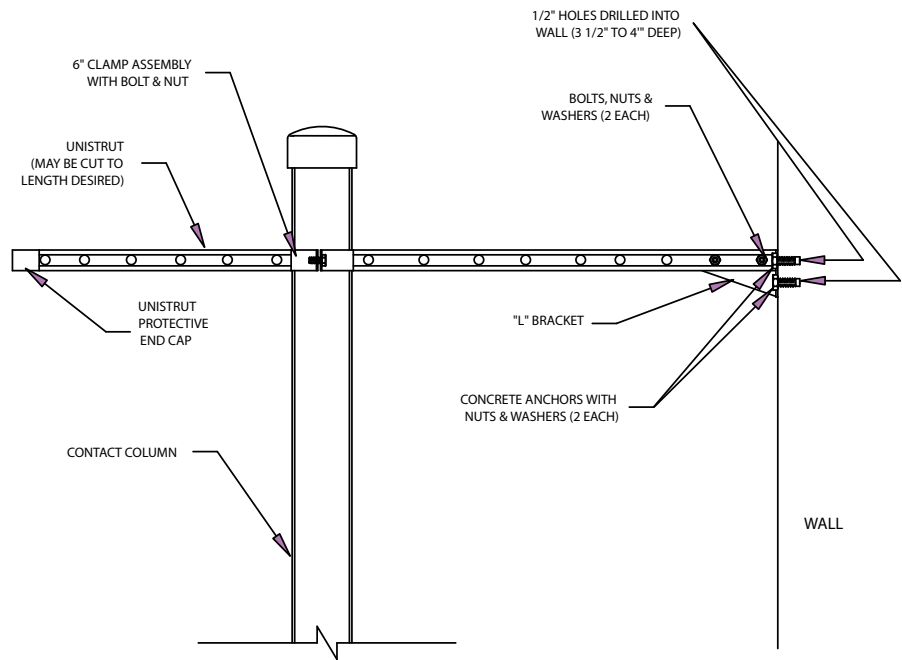
MOUNTING TO A WALL OR OTHER SOLID MOUNTING SURFACE USING THE CONTACT COLUMN HARDWARE KIT-

Refer to the diagrams on the other side and follow these instructions:

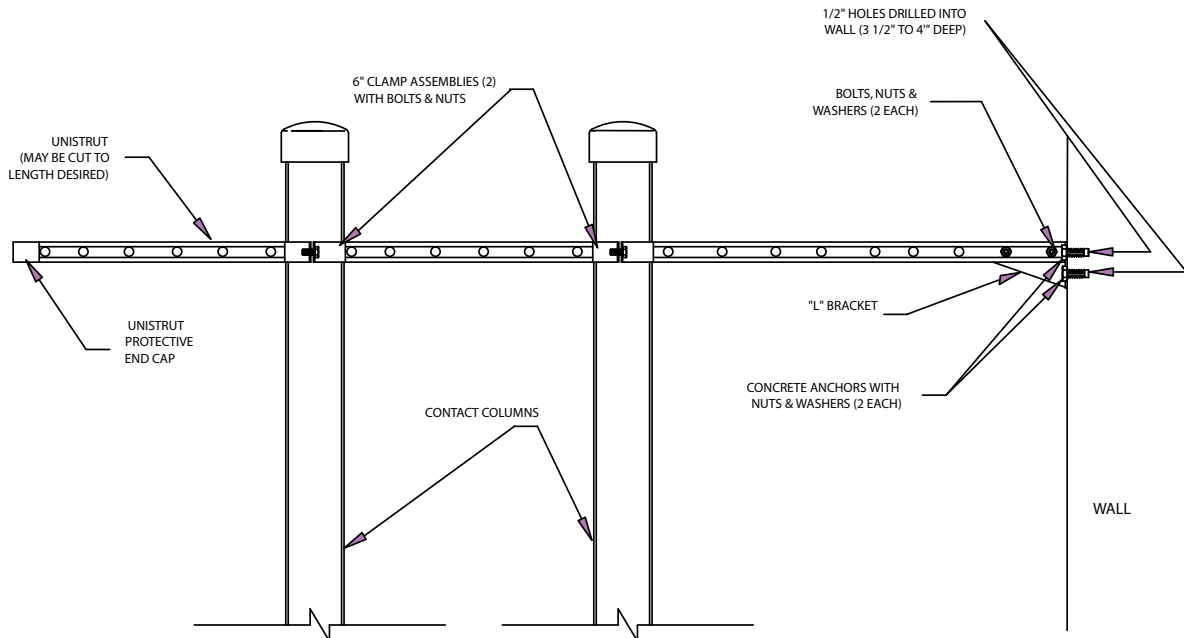
1. Locate the following items from the hardware kit:
 - "L" bracket
 - two $\frac{1}{2}$ " concrete anchors with nuts and washers
 - unistrut and protective end cap
 - 6" clamp assembly with nut and bolt
2. Mark the two holes for the "L" bracket on the wall. The "L" bracket should be located above the center of the length of the contact column. A foot or so from the top is ideal. Drill two $\frac{1}{2}$ " holes where you marked, about $3\frac{1}{2}$ " to 4" deep. Insert one concrete anchor into each hole with the threaded end sticking out. Slip the "L" bracket over these threaded ends and tighten down with the nuts and washers provided. This will cause the ends of the concrete anchors in the wall to expand and thus secure the "L" bracket to the wall.
3. Bolt the unistrut to the "L" bracket with two bolts, nuts and washers.
NOTE: The unistrut may be cut to length if desired.
4. Slip the two 6" clamp pieces into the unistrut around the contact column. Tighten bolt.
5. Attach the protective end cap to the exposed end of the unistrut.



Mounting contact column to wall using unistrut mounting system



Mounting two contact columns to wall using unistrut mounting system



ClearWater Tech, LLC.
Integrated Ozone Generators

850-E Capitolio Way, San Luis Obispo, Ca 93401 • 805-549-9724 • fax: 805-549-0306 • e-mail: service@cwtozone.com • www.cwtozone.com