

Clean Water Made Easy

www.cleanwaterstore.com

Birm Blend 5900-BT Installation & Maintenance Guide

Thank you for purchasing a Clean Water System! With proper installation and a little routine maintenance your system will be providing iron free water for many years.

Please review this start-up guide entirely before beginning to install your system and follow the steps outlined for best results.

The Birm media contains dust. Use paper mask and ventilate area to avoid breathing dust when first pouring the media into the tank.

**Minimum 30 PSI required. Maximum pressure 90 PSI.
For indoor installation. Protect from sunlight, rain, and freezing.**

Watch These How-to Videos:

<https://youtu.be/05mJy573Y6E>

For assistance call: 1-831-462-8500 M-F 8AM to 4PM PST

Email us: office@cleanwaterstore.com

More information online: www.cleanwaterstore.com



Table of Contents:

Packing Lists	3
How Your Birm 5900-BT Works	4
System Install Steps Overview	5
Pre-Installation.....	5
Best Practices for Piping & Drain Installation	6
Fig 2. Diagram of a Typical Installation	7
Add Filter Media and Install 5900-BT Backwash Valve on Tank	8
Attach the Bypass	10
Piping Installation	10
Program Your Valve: Main Menu.....	12
Program Your Valve: Main Menu.....	13
Program Your Valve: Master Programming Mode	14
See Historical Data and Real Time Flow Rate	15
Detailed Steps to Starting Up Your Birm 5900-BT System.....	15
Installing and Using the Optional Blue Tooth Legacy View App	17
Battery Back-up (9 Volt Battery Required)	21
How to Start A Manual Backwash.....	21
Birm -BT Blend Maintenance	22
Troubleshooting Chart	22
How to Remove Media Accidentally Stuck in Control Head	23
Error Codes	24
Pressure Loss from Inadequate Backwash Flow Rate.....	24
Problems with Pressure Loss or Reduced Flow	25
Service Instructions – Perform Before Doing Any Service	25
How to Replace Powerhead.....	25
How to Replace Piston Assembly.....	26
How to Replace Seals and Spacers.....	27
How to Replace Meter	27
How to Replace the Birm Filter Media.....	28
Valve Body Assembly S900-BT	29
Valve Body Assembly S900-BT Parts List	30
Control Valve Assembly 5900-BT & Parts List.....	31
Limited Warranty	32

Pro Ox 5900-BT Installation & Maintenance Guide

Packing Lists

Birm Blend 5900-BT 1044 1.0 Cubic Foot

5900e Control Valve w/ Bypass Assembly & Pipe connector kit (1" or ¾")
10" x 44" filter tank with distributor tube
0.5 cubic foot of Birm media
0.5 cubic foot of Calcite/Corosex media
12 lbs. Filter gravel

Birm Blend 5900-BT 1054 1.5 Cubic Foot

5900e Control Valve w/ Bypass Assembly & Pipe connector kit (1" or ¾")
10" x 54" filter tank with distributor tube
1.0 cubic foot of Birm media
0.5 cubic foot of Calcite/Corosex media
16 lbs. Filter gravel

Birm Blend 5900-BT 1252 2.0 Cubic Foot

5900e Control Valve w/ Bypass Assembly & Pipe connector kit (1" or ¾")
12" x 52" filter tank with distributor tube
1.5 cubic foot of Birm media
0.5 cubic foot of Calcite/Corosex media
20 lbs. Filter gravel

Birm Blend 5900-BT 1354 2.5 Cubic Foot

5900e Control Valve w/ Bypass Assembly & Pipe connector kit (1" or ¾")
13" x 54" filter tank with distributor tube
Blue media funnel for adding the Birm Blend media
2.0 cubic foot of Birm media
0.5 cubic foot of Calcite/Corosex media
35 lbs. Filter gravel

*** The Corosex in the Calcite/Corosex blend is optional, depending on your pH, and may not be included in your shipment.**

What to Do if Your Tank Does Not Sit Level on Floor Out of the Box:

Your black filter tank base is not glued to the bottom of your tank. Occasionally tank bases will become crooked during shipment. If you find that that your tank does not sit level on the floor, you can easily adjust it by holding the empty tank and rapping it on a concrete or solid floor once or twice to level it.

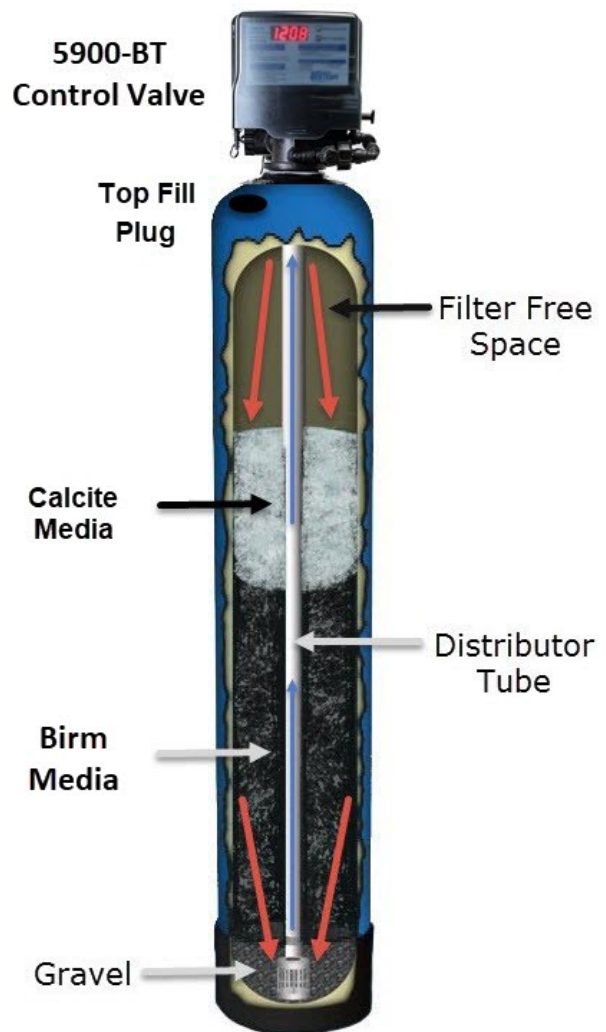
How Your Birm 5900-BT Works

The Birm 5900-BT when properly applied, is an efficient and cost effective system for the removal of iron and sediment.

Water enters your iron filter through the top of the tank and flows down through the calcite media (red arrows) then the Birm filter media and up the distributor tube (blue arrows).

The Birm Blend filter neutralizes acid water pH, removes iron and automatically backwashes which cleans the media inside.

During backwash the flow of water is reversed: water flows down the distributor tube and up through the media, lifting, expanding, and cleaning it.



System Install Steps Overview

1. Put gravel in first, then Birm media, then Calcite (and/or Corosex if your system is using Corosex). Fill with water and let media soak while you install piping.
2. Make the plumbing connections from your existing system to the bypass assembly, installing extra valves, unions, pressure gauges and hose bibs as needed.
3. Attach the control head to the tank, and to the bypass assembly.
4. Install the Drain Line tubing
5. Plug in the power supply and program the valve.
6. Follow the instructions to put the system online and to verify the system is leak-free.

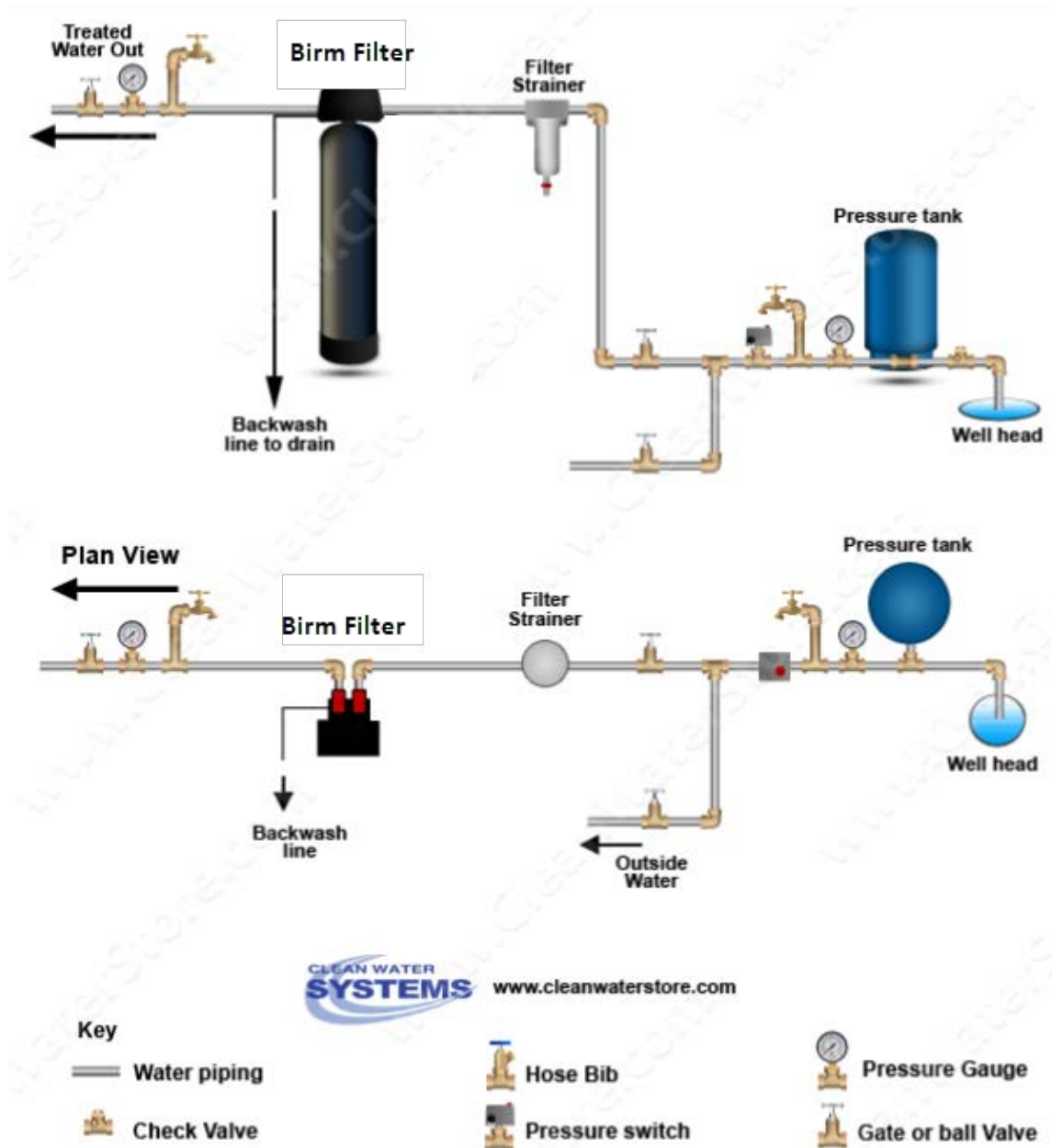
Pre-Installation

1. Review your packing list to make sure you have received all the parts before installation.
2. If you are going to be turning off the water to the house and you have an electric water heater, shut off the power to the water heater before beginning installation.
3. Pick a suitable location for your filter system on a dry level spot where it won't be exposed to freezing temperatures, direct sunlight, wind or rain.
4. After the system is installed and running, your water may be discolored, or full of sediment or rust, especially if you have older or corroded piping. This typically clears up over a day or two.

Best Practices for Piping & Drain Installation

1. See typical installation (Fig 2). The Birm filter is installed after the pressure tank.
2. Install on a level floor or surface.
3. Filter system must be installed at least 10 feet ahead of inlet to water heater to prevent damage due to back-up hot water or use a check valve to prevent hot water back-up.
4. DO NOT install the unit in an area of direct sunlight or expose to freezing.
5. Locate the unit near an unswitched, 120 volt / 60 Hz grounded electrical outlet.
6. Filter system must be installed at least 10 feet ahead of inlet to water heater to prevent damage due to back-up hot water or use a check valve to prevent hot water back-up.
7. DO NOT install the unit in an area of direct sunlight or expose to freezing.
8. Locate the unit near an unswitched, 120 volt / 60 Hz grounded electrical outlet.
9. Make sure to connect the IN pipe to the 5900-BT inlet and the OUT pipe to the outlet.
10. Make sure there is a working gate or ball valve before the 5900-BT Birm Filter and also one after as shown in Fig 2. The pressure gauges are optional. A hose bib (which is a faucet that you can attach a garden hose to) is strongly recommended after the Birm Filter and before the second ball valve, for rinsing and sampling water.
11. If you will be using copper piping, do not sweat the copper pipe directly on to the 5900-BT control valve. Avoid heating up the 5900-BT control valve plastic with the torch.
12. You do not need unions to install your 5900-BT control valve. If you need to remove it, the 5900-BT has quick-release couplings that make it easy to put the filter on by-pass and remove the filter system from the piping.
13. The drain line tubing is connected to a drain from the drain outlet using flexible poly tubing. The drain can run up above the control head and out to a drain, although this may require installing a one way, flapper-style check valve. **Most plumbing codes require an air-gap connection, so that if your sewer or septic tank backs up, it cannot cross connect with the drain tubing (if running tubing into the washing machine drain pipe, for example)**

Fig 2. Diagram of a Typical Installation



Installation of Your System into Copper or Metal Piping Systems

If your new filter system is to be installed in a metal (conductive) plumbing system, i.e. copper or galvanized steel pipe, the plastic components (bypass and connectors) will interrupt the electrical continuity of the plumbing system.

As a result, any stray currents from improperly grounded appliances downstream or potential galvanic activity in the plumbing system can no longer ground through the contiguous metal plumbing.

Some homes may have been built in accordance with building codes which encouraged the grounding of electrical appliances through the plumbing system.

The installation of a bypass consisting of the same material as the existing plumbing, or a grounded "jumper wire" bridging the equipment and reestablishing the contiguous conductive nature of the plumbing system must be installed prior to your systems use.

This is simple and easy step to take if you are installing your water treatment system into copper piping. A simple ground jumper wire with a pipe clamp can be purchased at any Home Center, or hardware store etc. for a few dollars.

Add Filter Media and Install 5900-BT Backwash Valve on Tank

1. **Make sure you "test fit" distributor tube, find divot that keeps tube centered, before adding gravel so distributor tube does not extend past top of tank.**
2. There are two styles of funnel that we ship, depending on availability; you get either the blue or black funnel.
3. If blue funnel, cover top of distributor tube with black electrical tape, duct tape or masking tape so no gravel or media will go down distributor tube when adding media.
4. Leave a folded tab of tape so you can easily pull off tape after filling the tank.
5. Hold the tube center until there is enough gravel and media to support the tube. The top of the distributor tube should be level with the top opening of the filter tank.

Make sure top of distributor tube
is level with top of tank



6. Add the filter gravel that came with your order. The gravel should cover the bottom distributor screen before adding the Birm filter media.
7. Next, add the Birm Filter media. Finally add calcite media, but do NOT over-fill.
8. The tank should be about 2/3 full of media, do not fill much more than 2/3 full, even if there is media left over. You may end up with left over Calcite, which can be used later.
9. Fill with water and allow to soak for at least 1 hour up to 24 hours before you hook it up to piping.
10. Remove tape from top of distributor tube. **Be careful not to pull up distributor tube.**
11. Attach plastic top screen to under-side of the 5900-BT control valve. It is a funnel-shaped plastic screen that snaps on to the control valve and prevents resin from being backwashed out to drain during the regeneration cycles. It may twist on clockwise or counter-clockwise.



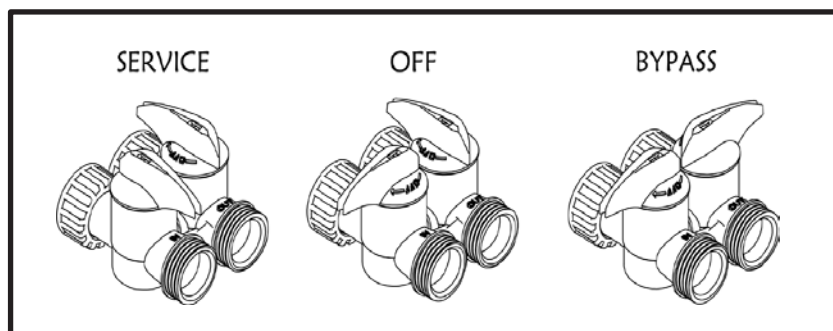
12. **Screw on Control Valve:** Add small amount of silicone grease to both O-rings (only O-rings, not tank thread) on bottom of control valve and screw on 5900-BT control valve carefully.
13. **Do not lubricate tank threads or any other fittings other than O-rings. Do not use pipe-joint compound, vegetable oil, Teflon tape, or Vaseline or greases on tank threads.**
14. If you accidentally pull distributor tube up after gravel and media are in tank (upon initial install or any time after, for service, etc.), it must be re-seated. It is usually possible to do this by spraying water down distributor tube with a garden hose while pushing on end of the tube. If this does not work, you must empty tank completely and start over.

15. **Do not hard pipe the drain line with PVC or copper, use flexible tubing.** If you use hard PVC piping for the drain line, **you must be able to remove the hard drain piping and attach flexible tubing for testing purposes.**
16. **Make sure the drain tubing is firmly clamped to the barbed fitting with a hose clamp to prevent leaks or blow-offs.**

Attach the Bypass

Make sure there is lubricant on all three sets of O-rings and insert and screw bypass onto end connectors (O-rings are already on valve).

Screw the Elbow fittings onto the end of the bypass and attach to service pipe. **Note:** There is supposed to be some “play” in the whole assembly. No need to over-tighten or to screw them too tight.



Piping Installation

1. Using Teflon tape on pipe threads, make sure to connect the IN pipe to inlet and OUT pipe to the outlet. As you face the 5900-BT control from the front, the water enters on the right and exits on the left. From the back the water enters on the left.



Pro Ox 5900-BT Installation & Startup Guide

- The inlet and outlet are attached to the bypass valve, which is marked with arrows as well.
- Make sure there is a hose bib installed after the system, and a working gate or ball valve before filter system and also one after as shown in Fig 2. The pressure gauges are optional but **a hose bib is strongly recommended after the Birm 5900-BT and before the second ball valve.** This makes it easy to rinse your new system on start-up and gives you a place to test water before it enters your house plumbing.



Hose Bib

- If you will be using copper piping, do not sweat the copper pipe directly on to the 5900-BT control valve. Avoid heating up the control valve with the torch, as the plastic will melt.
- You do not need unions to install your 5900-BT control valve. If you need to remove it, the 5900-BT control valve has quick-release couplings that make it easy to put the 5900-BT on by-pass and remove the filter system from the piping.
- The drain line tubing is connected to a drain from drain outlet using flexible tubing. Note that drain line can run up above the 5900-BT control and into a drain.
- Most plumbing codes require an air-gap connection for the drain line tubing, so that if your sewer or septic tank backs up, it cannot connect with the drain tubing.



External Drain Line Flow Control ("DLFC")

If you bought a 2.0 or 2.5 cubic foot Birm 5900-BT Filter you will get an external Drain Line Flow control with your order. This is made up of three pieces: a 1" x 3/4" Adapter, the DLFC, and two hose barb fittings.



Assemble the 3 parts using Teflon tape, making sure the flow arrow is facing the right direction. This can go anywhere in the drain line run, even at the end. Clamp it to a wall.

Program Your Valve: Main Menu

1. Enter main menu, by pressing the Menu/Enter button
(Time of day will flash)
2. Set time of day by pressing the Set/Change button
(First digit will begin to flash)
3. While scrolling through numbers, it increases value.
4. To decrease the value, you will have to “go all the way around” to a lower value.
5. To change digit value, press the Set/Change button
6. To accept the digit, press the Menu/Enter button
7. With all digits flashing press the Menu Button to set A.M. or P.M.
8. Once A.M./P.M. is accepted the next menu item will flash
9. To Set Regeneration Frequency Press the Set/Change Button
10. The recommended initial setting for a Birm 5900-BT filter is every 3 to 4 days
11. To exit menu, press the Menu/Enter button



Program Your Valve: Main Menu

12. Remove cover by pulling out front and back tabs slightly and lifting straight up to access control panel.
13. Enter main menu, by pressing the **Menu/Enter** button once (Time of day will flash)
14. Set current time of day by pressing the **Set/Change** button (First digit will begin to flash)
15. To change digit value, press the **Set/Change** button.
16. To accept the digit, press the **Menu/Enter** button
17. Once the last digit for current time of day is accepted all digits will flash.
18. With all digits flashing next press the Menu Button to set A.M. or P.M.
19. Once A.M./P.M. is accepted the next menu item will flash
20. To Set Number of Days Between Backwash Cycles (A) Press the Set/Change Button and set number of days between cycles. Maximum value is 29. If value is set to 0, no automatic backwash will occur.
21. **The recommended initial backwash frequency setting for the Sediment Backwash Filter is every 3 to 4 days** for families or heavy use and every 7 days for 1 to 2 persons in the home. If you experience pressure loss in between backwashes, increase frequency of backwash up to once per day.
22. To exit menu, press the Menu/Enter button



Program Your Valve: Master Programming Mode

1. Regeneration Time (r)

Press the Menu/Enter Button. To enter Master Programming Mode press and hold both buttons for 5 seconds.

The next display viewed is the option setting for Regeneration Time. It is identified by the letter 'r' in the left digit. Set the desired time of day that a regeneration may occur, when required.

We recommend setting the system to backwash at 2 AM, or at any time that it is unlikely that any water will be used.

If you have 2 or more filters, make sure they are programmed to start an hour apart, so they do not backwash at the same time.

The first digit(s) indicates the Hour and the other digit indicates A.M. or P.M.

Example: 12 A.M. regeneration time - [r 12A] (factory setting)

2. Regeneration Cycle Step Programming Times

The next 3 displays viewed are part of a series of option settings used to program the Regeneration Cycle which is where the filter backwashes and rinses itself. Up to 3 steps can be programmed and they are: Backwash, Rest, and Rapid Rinse.

Each display is used to set the duration time in minutes for that specific step in a regeneration cycle. Regeneration steps are *skipped* by setting the display to 0 as shown below:

Set each step according to the values below, appropriate for a 5900-BT filter system:

- 1 10 minutes. This is the BACKWASH cycle. [1 - 10] (Set for 6 minutes minimum)
- 2 5 minutes. This is the REST cycle. [2 - 5]
- 3 6 minutes. This is the RAPID RINSE cycle. [3 - 05] (Set for 4 minutes minimum)
- 4 Next step will be "bE 1". If you are using the Bluetooth Legacy App, the 01 means that it's ready.
- 5 Next and final step is bbPP is displayed for one second, then password is displayed.

Press the menu/enter button, and now you are back to the home service screen (displaying the clock time and the number of days until backwash). bE is for Bluetooth enabled.

See Historical Data and Real Time Flow Rate

Pressing and holding the Menu/Enter button will also access some options:

Flo- this is the flow rate, if water is running, it will display the volume, in gallons per minute.

Gt r- This the total # of gallons that has gone through the filter.

g tot- this is the same as the previous.

rC r- number of regeneration done. **rC-** the same.

gPdL- shows how many gallons used each day.

Gbrl- is the gallons used between regenerations.

PfDL- This shows the peak, or highest flow rate that has passed through the filter in the last 24 hours.

If you “get stuck” in these options, keep pressing the Menu/Enter button until you have returned to the service screen.

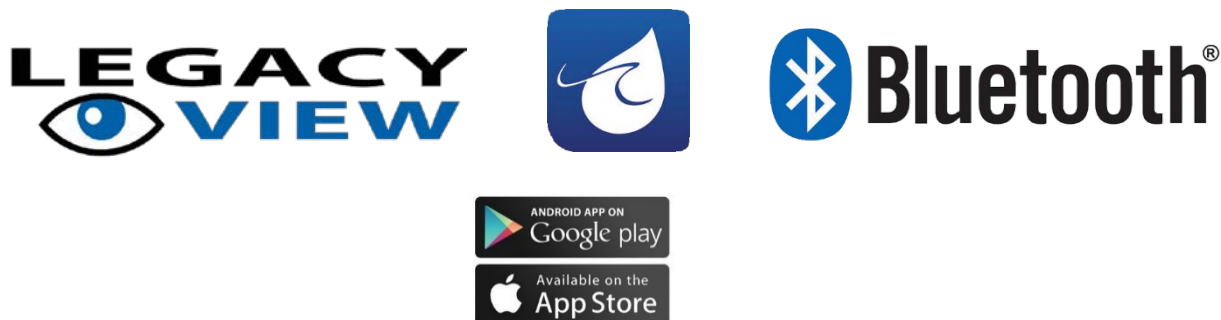
Detailed Steps to Starting Up Your Birm 5900-BT System

1. Dry new Birm filter media has a lot of black fines or dust in it, and must be rinsed free by backwashing and rinse, which may take several backwashes.
2. MAKE SURE THE SOURCE WATER ENTERS THE INLET PIPING (IN OTHER WORDS, THAT THE SYSTEM IS PIPED IN CORRECTLY, WITH WATER INLET TO THE INLET ON THE BYPASS VALVE)
3. MAKE SURE THAT BOTH THE INLET AND OUTLET BYPASS VALVES ARE CLOSED INITIALLY
4. MAKE SURE TO CLOSE THE BALL VALVE OR GATE VALVE AFTER THE FILTER SO NO WATER CAN ENTER THE HOME DURING THIS INITIAL BACKWASH. (If you did not install a hose bib and gate or ball valve after the system as recommended, be sure to NOT use any water in the home during the initial start-up.)
5. If you have any filters or softeners installed after the filter system, bypass them until all media fines have been rinsed.
6. First, if days remaining is not already at 1, press and hold the Set/Change button.
7. Next press and hold the **Set/Change button**, until the valve begins the backwash cycle and the display reads 1 [1- 10]. This is the first cycle that starts a backwash.

8. Start to put the valve into the service position by turning the inlet bypass knob counter-clockwise a little, slowly, until you can hear water passing through the bypass into the filter. Stop and wait until you see water coming out of the drain line. It will often be mixed with air bubbles.
9. When you do not see bubbles anymore, keep opening the valve, a little bit at a time, stopping for a minute or two each time. You want to see a corresponding increase in flow out of the drain line as you increase the flow of water into the filter.
10. After several minutes, you should have the valve fully open, and with no media coming out. The water will be black, turning to gray, mostly clear water- the water does not get crystal clear in the Backwash mode (only at the end of Rapid Rinse and during Service).
11. After the backwash cycle, the filter will go into a rest for 5 minutes. After 5 minutes the next cycle, the Rinse cycle will start.
12. NOTE: To skip to the next cycle or fast forward past Rest or other cycles, hold down Set/Change button for 3 seconds.
13. Let the unit do the Rapid Rinse cycle and advance to the "Service" position.
14. Press and hold the **Set/Change button**, until the valve begins the backwash cycle and the display reads 1 [1- 10] and start up another backwash, rest, rinse sequence. You may need to repeat this process 2 to 4 times to thoroughly clean up the filter media.
15. Next, open the outlet on the bypass valve and then open the hose bib after the system and allow the water to run until it is clear. Run water in the home using a bathtub, laundry sink, or other fixture that does not have an aerator screen as any remaining residue may get caught in the screen. Run the water in the home for 5 to 10 minutes to flush pipes.

Congratulations, you are done starting up your filter system!

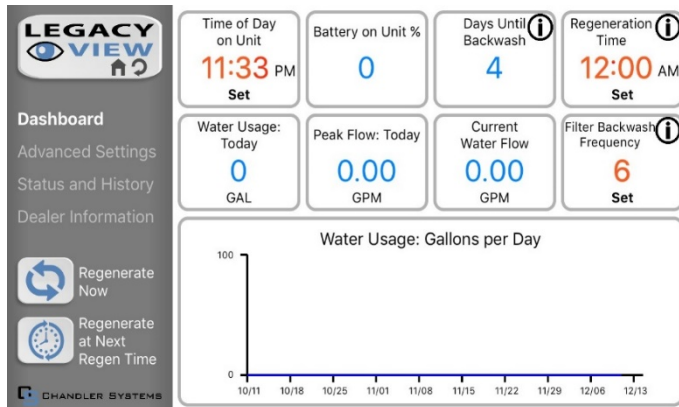
Installing and Using the Optional Blue Tooth Legacy View App



For simplified set up and control, please install the Legacy View on a compatible Bluetooth 4.0+ enabled smart phone or tablet.

1. Download and install the Legacy View app from the Google Play Store, Apple App Store.
2. Open the Legacy View app
3. Choose a valve device at any time from the list of available devices to connect to by clicking on it (which means your 5900-BT control valve, or valves if you have more than one system)
4. If the valve you want to connect to doesn't show up, or there is a problem connecting press the "Scan for Devices" button or the Legacy View logo at any time to refresh the list and start the process over.
5. If the valve device is a BTLE valve and it has a password other than the default password, the first time you connect to it the app will ask you to enter the password.
6. After entering it the first time you should not need to enter it again unless it changes.
7. The control valve firmware can be updated by the App. When the app is updated from the Google Play Store or the Apple App Store, it may contain an updated firmware program for the valve devices.
8. These updates could contain new features or operational improvements. It is up to the user to allow these updates to be sent to the valve device. Uploading a new program takes approximately 1 minute.

Legacy Phone App Dashboard

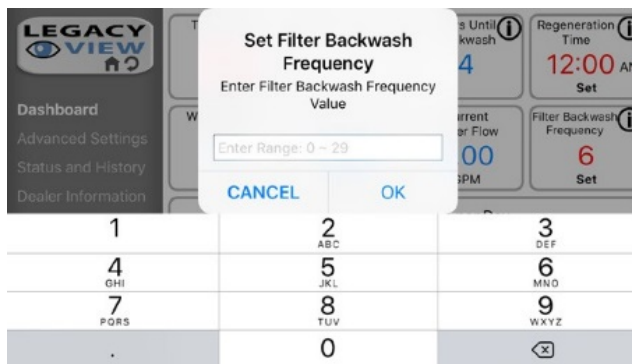


From the **Dashboard**, all items in **ORANGE** can be changed, while blue fields are informational only.

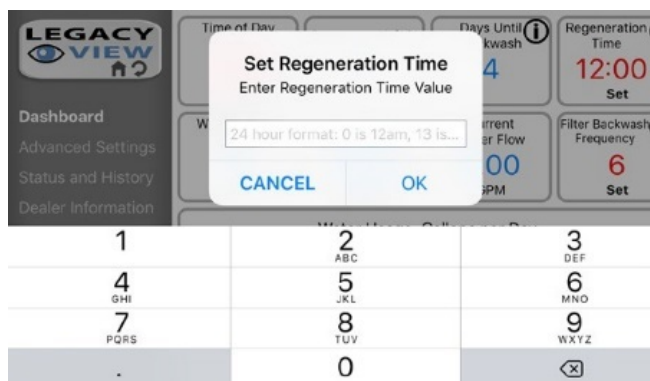
If you are unsure about the function of the field, click the Info icon for more information



1. Change Time of day (Press “set” to set time automatically based on device time)



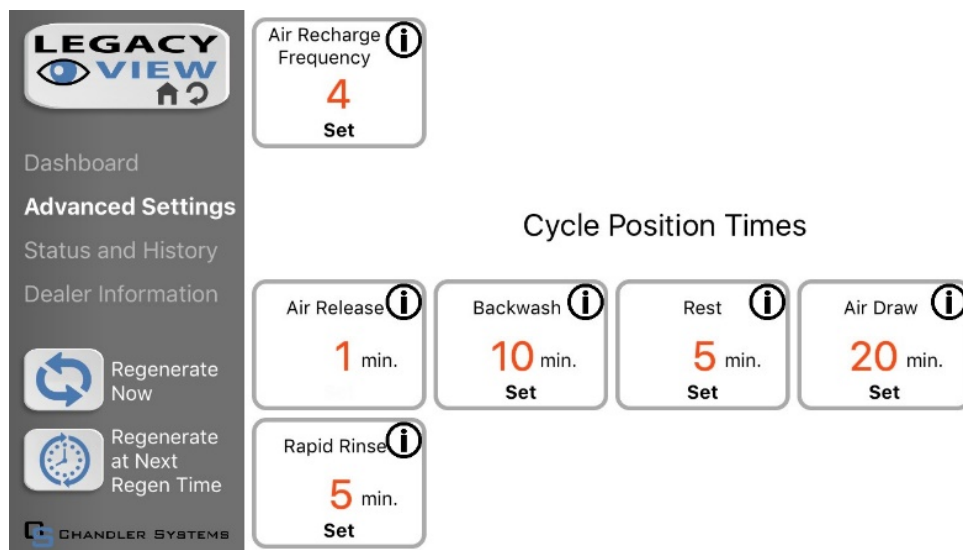
2. Set Backwash Frequency. This sets the amount of days between backwash cycles.



3. Set Regeneration Time. Example: For 2am, just type 2 and press OK.

Legacy App Advanced Settings

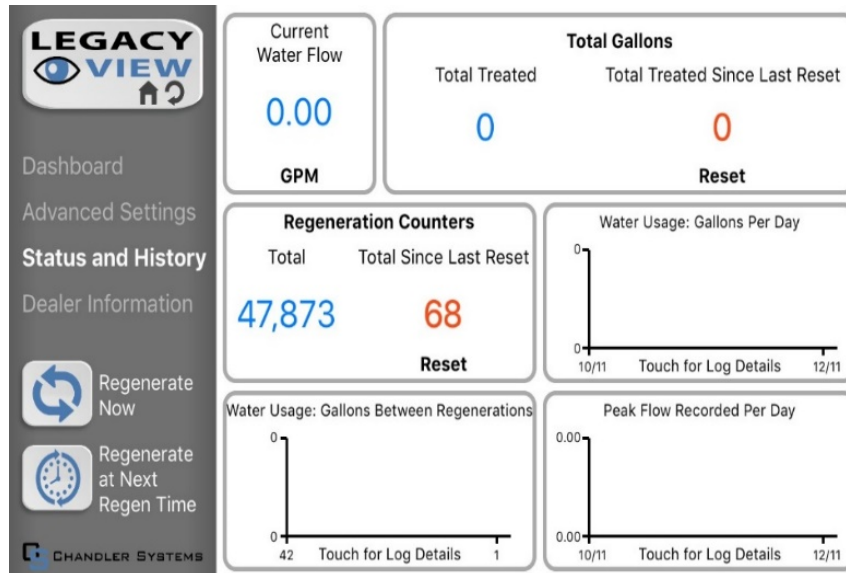
From the Advanced Settings, all items in **ORANGE** with a “set” button can be changed.



Touch any table to explode a detailed list of the last 60 days.

Status and History Using Legacy View App

From the Status and History, all items in **ORANGE** can be reset.



Start a regeneration or backwash cycle



Option 1: Click on “Regenerate Unit Now.”



If you would like to force the unit into the next cycle step, Click “Go to next Regeneration Step.”



Option 2: “Regenerate Unit at next Regen Time” button. This will take the system into a backwash at the next regeneration time.

Filter System Normal Operation

- Normal display alternates between time of day and days until regeneration.
- Days remaining until the next regeneration will count down from the regeneration day override value to 1 day remaining. Once count reaches 1, a regeneration will be initiated at next scheduled regen time.

Battery Back-up (9 Volt Battery Required)

1. Attach a 9v battery (not supplied) to its cable. Battery lays on bottom plate of valve, below circuit board assembly. **DO NOT INSTALL BATTERY UNTIL AFTER INITIAL BACKWASH!**
2. The purpose of the battery is to hold the clock time during a power outage (all other values are stored on the circuit board) and to advance the valve to a cycle step that will not allow water to run to drain, if the power failure occurs during a backwash cycle. If this event happens, replace the battery afterwards

How to Start A Manual Backwash

1. If days remaining is not already at 1 press and hold the Set/Change button.
2. After 7 seconds the days remaining display will read: [1]
3. With days remaining at 1 press and hold the Set/Change button again.
4. After 5 seconds the regeneration cycle will begin.
5. Fast Cycling Through each Step
6. First complete above immediate cycle steps
7. Press and hold the Set/Change button
8. After 3 seconds the valve will start to advance to the next step

Birm -BT Blend Maintenance

- Check pH before and after your system every few months. Add additional calcite and/or Corosex as needed to keep tank 2/3rds full of media.
- Replace the seals and spacers (see Page 27) every 2 – 5 years.
- Please see our site for instructional videos. Maintenance is fast, it takes less than 20 minutes to replace seals and spacers and clean injectors.

Troubleshooting Chart

SYMPTOM	PROBABLE CAUSE	CORRECTION
1.Fails to Regenerate Automatically	Power supply plugged into intermittent or dead power source	Connect to constant power source
	Improper control valve programming	Reset program settings
	Defective power supply	Replace power supply
	Defective Drive motor	Replace motor
2. Regeneration at Wrong Time	Time of day improperly set, due to power failure	Reset time of day programming and install 9-volt battery.
	Regeneration time set improperly	Reset regeneration time programming
3. Poor Water Quality	Check items listed in #1 and #2	
	Bypass valve open	Close bypass valve.
	Channeling	Check for too slow or high service flow. Check for media fouling.
	Lack of aeration in water	Program valve to draw air more frequently. Increase number of minutes in air draw cycle. Clean injection assembly and screen (instructions on page 13).
4. Loss of Water Pressure	Scaling / fouling of inlet pipe	Clean or replace pipeline. Pretreat to prevent.
	Fouled media	Clean media. Pretreat to prevent.
	Improper backwash setting	Backwash more frequently
5. Continuous Flow To Drain	Foreign material in control	Clean valve and replace pistons and seals.
	Internal control leak	Same as above.
	Valve jammed in backwash or rapid rinse position	Same as above.
	Motor stopped or jammed	Check for jammed piston. Replace piston and seals. Replace motor if motor is unresponsive.
6. Media in Service Line	Plumbed in backward	Re-plumb the system properly
	Internal leak in unit	Call dealer.
7. Media Flows to Drain	Media did not soak long enough	Re-soak the media for a longer length.
	Incorrect or missing drain flow control	Check for proper flow control (reference no. 5 on page 9). Call dealer, if problems persist.

How to Remove Media Accidentally Stuck in Control Head

Sometimes, when doing the Initial Backwash and Start-Up only, the media can get lifted into the control head.

You can tell this has happened because you will have little or no flow, either going out to drain while in the backwash position, or when in the service position.

- 1) Put the Inlet Bypass in the Closed position.
- 2) From Service Mode, initiate a manual regeneration, by pressing and holding regen button.
- 3) The valve will advance to the BW (backwash) position and start counting down. Press the Regen button again and wait for the valve to advance and stop at the Rapid Rinse (RR) position.
- 4) With the valve in the RR position, open and close the Inlet Bypass valve several times.
- 5) With the Inlet Valve OFF, Advance the valve back to Service position again, and again press and hold the Regen button, we are putting the valve back to the Backwash position.
- 6) Open the Inlet valve just enough so you can hear the water passing thru the valve- you should notice a corresponding slow flow out of the drain line.

Any time that you are in the Backwash or Rapid Rinse position, you may unplug the power, and this will hold the valve in its current position, so it doesn't 'time out' and go to next position. When you plug the valve back in, after a minute it will return to where it was when you unplugged it (i.e. 2:32 remaining in BW).

It is not possible to jam media into the head while in Rapid Rinse, or Service, just in the Backwash, when the flow direction is reversed and **only during initial start-up**.

What you are trying to accomplish, after you have pushed the media back in to the tank in the Rapid Rinse position, is to get the Inlet valve all the way open in the Backwash position, without it jamming media back in the head.

Once it does that successfully, you are done.

Error Codes

There are five (5) error codes that could indicate a possible problem with the control valve:

Error 2 - Homing slot expected. Valve will start looking for home. (Normal operation continues)

Error 3 - Encoder is not sending a signal (Either encoder chip has failed, or is not connected)

Error 4 - Unable to find homing slot (Usually because encoder chip has failed)

Error 5 - Motor overload (stalled position or shorted motor, valve requires service to continue)

Error 6 – Motor not getting power (usually means cable has disconnected from circuit board.)

Pressure Loss from Inadequate Backwash Flow Rate

One problem that may occur is if you do not have enough backwash flow rate to properly clean the Birm filter media, particularly if you are on well water and have very low flow and pressure (not usual).

“Flow Rate” is simply how many gallons will flow in one minute, out the drain tubing. If the system is in a backwash and flowing, if it fills a 5-gallon bucket in one minute, it is “5 GPM”

You can verify the backwash flow rate by running the drain line into a bucket and timing it when the 5900-BT control is in backwash.

Problems with Pressure Loss or Reduced Flow

1. First make sure that the problem is the 5900-BT Filter and not another cause. Check the flow rate out of a faucet, with the 5900-BT control valve on by-pass.
2. Greater flow and pressure when the unit is on bypass means the problem is in the filter. No change would indicate the problem is before the filter.
3. **The valve:** Over time, deposits can build up on the inside of the valve, and prevent the piston from moving, or fully advancing to where it needs to be, and this can affect the flow. The solution is to replace the seals and spacers, clean the valve where you removed the parts, clean and inspect the piston, and re-install.
4. **The filter media:** As is already noted in the guide, backwash must be done with sufficient flow rate and be backwashed frequently enough to keep the Birm filter media clean.
5. **Mud-ball formation:** If your water has high levels of sediment, silts, or clay getting into the filter, over time these elements combine to form balls which will ruin filter performance. If multiple backwashes do not recover the media, take the control head off & inspect media.

Service Instructions – Perform Before Doing Any Service

- A1. Turn off water supply to filter and put it in the bypass position.
- A2. Remove cover and relieve water pressure in the 5900-BT control valve by stepping the control into the backwash position momentarily. Return the control to the service position.
- A3. Unplug electrical cord from outlet.

How to Replace Powerhead

- B1. Remove the control valve cover and disconnect the power supply.
- B2. Disconnect meter cable from circuit board, feed through control (if meter is being re-used)
- B3. Remove lower back base screws and detach lower back base.
- B4. Remove screw and washer at drive yoke.
- B5. Remove powerhead mounting screws.

B6. The entire powerhead assembly will now lift off easily.

B7. Put new powerhead on top of the valve. Be sure the drive pin on main gear engages slot in drive yoke (wide side of drive yoke upright must face to the left away from the motor).

B8. Replace powerhead mounting screws. Replace screw and washer at drive yoke.

B9. Reattach lower back base.

B10. Reconnect meter signal, wire and power supply.

B11. Reinstall cover.

How to Replace Piston Assembly

C1. Follow steps **A1 - A3**

C2. Disconnect the meter signal wire from the circuit board.

C3. Remove lower back base screws and detach lower back base.

C4. Remove screw and washer at piston drive yoke. Remove powerhead mounting screws. The entire powerhead assembly will now lift off easily.

C5. Remove piston retaining plate screws.

C6. Pull upward on end of piston yoke until assembly is out of valve.

C7. Inspect the inside of the valve to make sure that there is no foreign matter that would interfere with the valve operation.

C8. Install new seals and spacers.

C9. Take new piston assembly and push piston into valve by means of the end plug.

C10. Twist drive yoke carefully in a clockwise direction to properly align it with drive gear.

C11. Reinstall piston retaining plate screws.

C12. Follow steps **B5 - B9**

How to Replace Seals and Spacers

D1. Follow steps **A1 - A3**.

D2. Disconnect the meter signal wire from the circuit board.

D3. Remove screw and washer at piston drive yoke. Remove powerhead mounting screws. The entire powerhead assembly will now lift off easily. Remove piston retaining plate screws.

D4. Pull upward on end of piston rod yoke until assembly is out of valve. Remove seals and spacers. (Note: Special end spacer must be reused)

D5. Lubricate new seals with silicone lubricant included in the seal and spacer kit. Make sure the special end spacer is properly seated in the valve body.

Install new seals and spacers individually, pressing around the outer edge of each seal to make sure it is seated. (When all seals and spacers are seated properly, you will have a 1/4" of space between the top seal the top of the valve body)

D6. Follow Steps C9 to C10.

How to Replace Meter

E1. Follow steps A1 - A3

E2. Unplug meter cable from front of circuit board.

E3. Unscrew meter assembly nut from valve body.

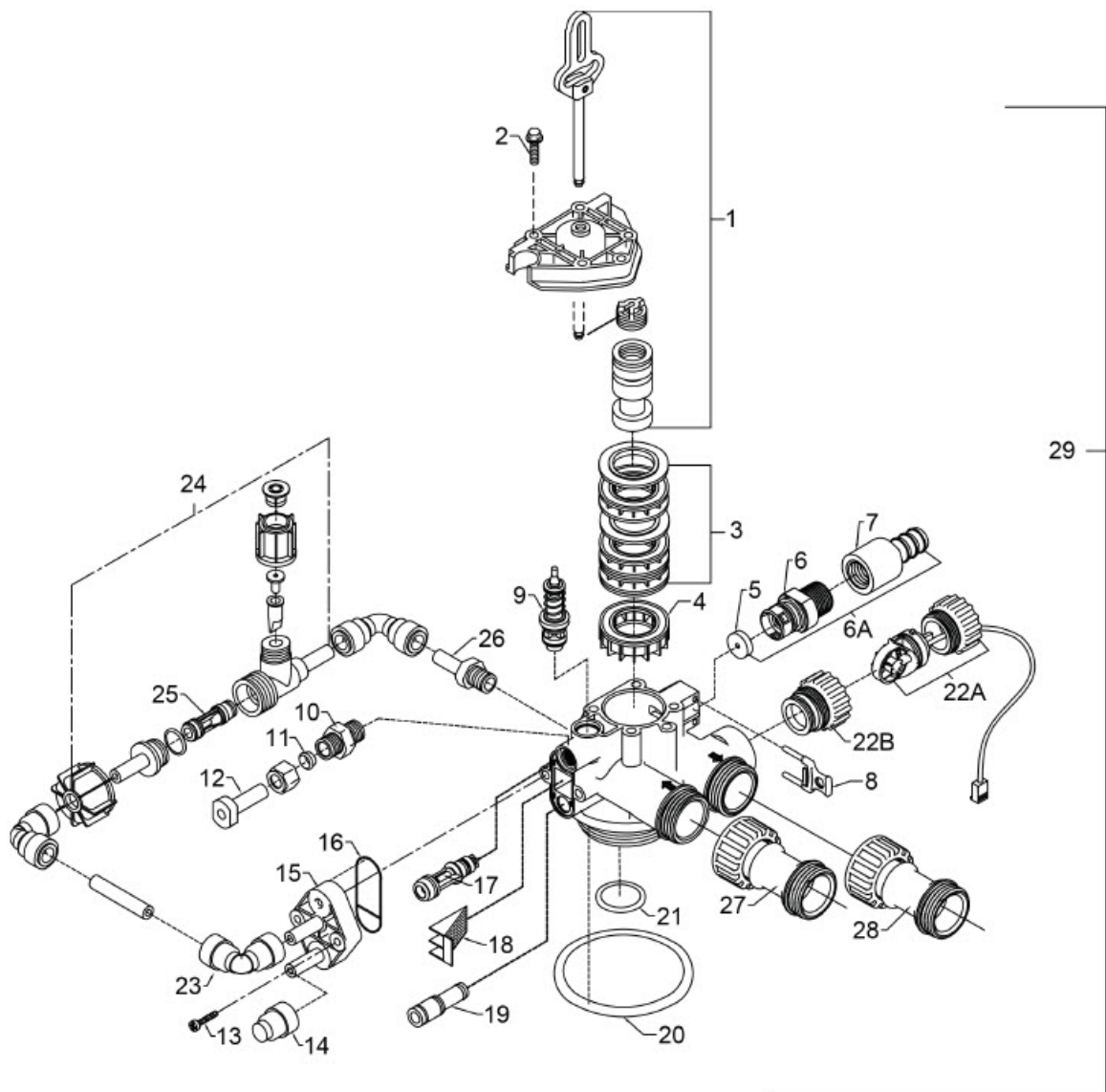
E4. Remove meter from valve body and clean or replace as necessary.

E5. Reinstall meter, nut and cable.

How to Replace the Birm Filter Media

1. Typically, after 4 to 5 years the Birm media will start to allow a small amount of iron to flow through the Birm media and needs to be replaced. To accomplish this:
2. Turn water to system and depressurize the filter by opening a hose bib or faucet after the Birm backwash filter system.
3. Put system on bypass and remove the union fittings between the bypass valve and the 5900-BT control valve.
4. Unscrew the control valve and set aside.
5. Siphon water out of the Birm filter by inserting a small flexible tube down the distributor tube and siphoning out the water.
6. Lay down clean tarp outside or somewhere you can flush water and clean the tank out.
7. Insert a garden hose in the tank and allow water to flow down center distributor tube. Birm media will begin to flow out on to the tarp.
8. Flush out all Birm media and gravel and discard to landfill or trash.
9. Rinse out filter tank until clean.
10. Add a ½ cup of household bleach and a few gallons of water and rinse inside of tank.
11. Rinse out filter tank until chlorine is gone.
12. Add gravel and new activated Birm and re-start up system following original directions in this manual.

Valve Body Assembly S900-BT

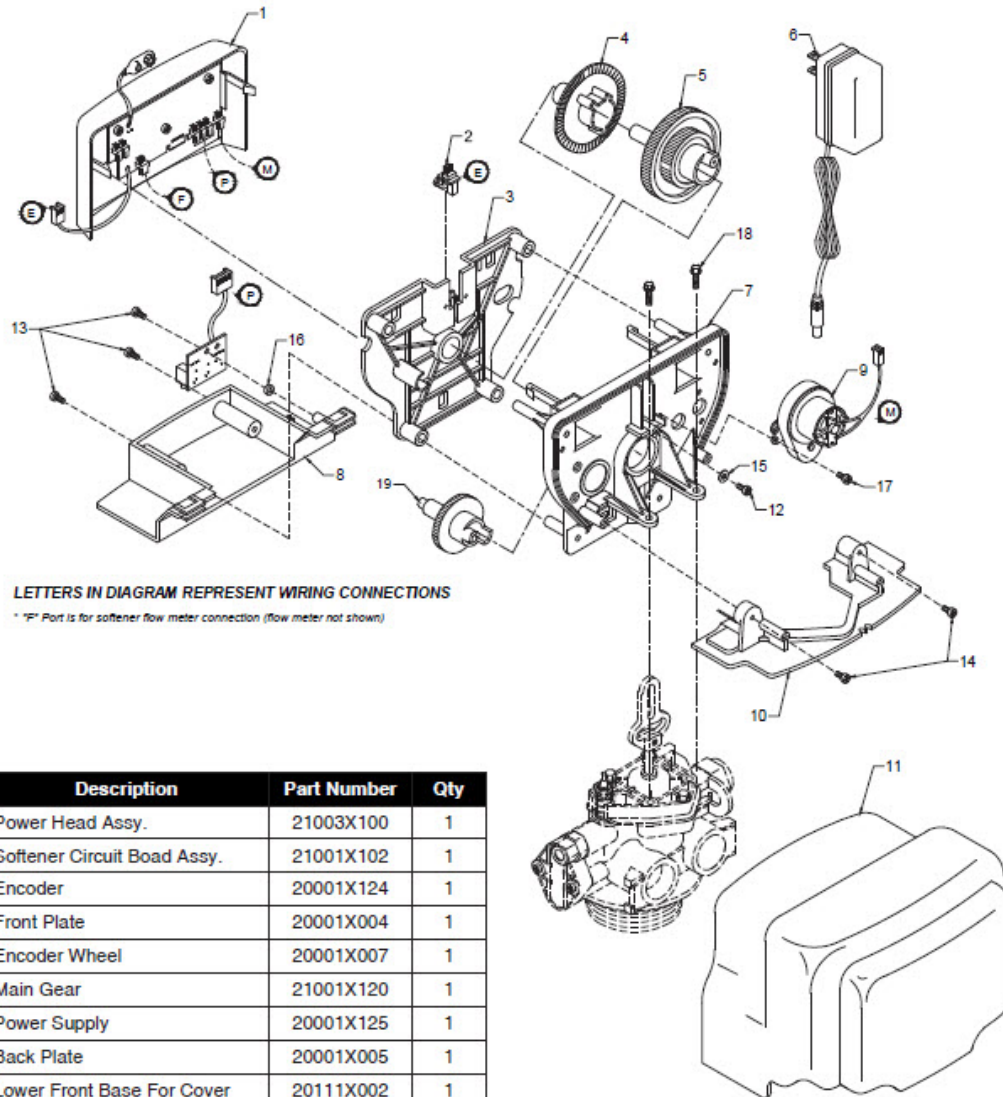


Pro Ox 5900-BT Installation & Startup Guide

Valve Body Assembly S900-BT Parts List

Ref	Description	Part No.	Qty
1	Piston Assembly	20001X231	1
2	10-24 X 13/16 Hex Head	20001X226	5
3	Seal and Spacer Kit	20561X253	1
4	Bottom Spacer	N/S	1
5A	Flow Control Button 2.4 GPM	20251X268	1
	Flow Control Button 3.5 GPM	20251X270	1
6	Plastic Flow Control Housing	20017X100	1
6A	Flow Control Assy. 2.4 GPM-PVC	20017X258	1
	Flow Control Assy. 3.5 GPM-PVC	20017X260	1
7	Drain Line Hose Barb, Straight	20017X255	1
8	DLFC Clip	20017X214	1
9	Brine Valve	20561X225	1
10	Brine Line Flow Control Assy.	20001X228	1
11	Brine Line Ferrule	20251X305	1
12	10-24 X 1 Hex Screw	20001X226	2
13	Injector Cover	20001X223	1
14	Injector Seal	20001X224	1
15	Injector w/ Check Ball - Blue	20017X220	1
16	Injector Screen	20001X222	1
17	Injector Plug	20001X217	1
18	Tank O-Ring	20561X205	1
19	Distributor Pilot O-Ring	20561X204	1
20	Flow Meter	20017X203	1
21/22	Valve Complete	VH1-B-D15	1

Control Valve Assembly 5900-BT & Parts List



Ref	Description	Part Number	Qty
0	Power Head Assy.	21003X100	1
1	Softener Circuit Board Assy.	21001X102	1
2	Encoder	20001X124	1
3	Front Plate	20001X004	1
4	Encoder Wheel	20001X007	1
5	Main Gear	21001X120	1
6	Power Supply	20001X125	1
7	Back Plate	20001X005	1
8	Lower Front Base For Cover	20111X002	1
9	Motor	20016X006	1
10	Lower Back Base for Cover	20111X003	1
11	Valve Cover	20111X000	1
12	Piston Screw	20001X003	1
13	Screw	SC10	3
14	Screw	SC9	2
15	Piston Washer	20001X002	1
16	Washer Circuit Board	20111X014	1
17	Screw Motor	SC2	1
21	Valve Hex Screw	20001X001	2

Pro Ox 5900-BT Installation & Startup Guide

Limited Warranty

We warrant this water filter/ softener/ conditioner, when installed according to factory recommendations, to be free from defects in materials and workmanship as follows:

-----Limited Warranty-----

This water conditioner unit is comprised of the finest industry components available. Each individual component used in the assembly of our equipment is covered by the original equipment manufacturer's warranty. All components, except those specifically listed below, are warranted for a period of one (1) year from date of installation to the original purchaser to be free of defects in materials and workmanship subject to the manufacturer's conditions and/or the conditions shown below.

-----Mineral Tanks-----

The fiberglass, polyglass or composite mineral tanks used in the assembly of this unit are warranted to be free of defects in materials and workmanship for a period of ten (10) years on 6" – 13" size tanks, and five (5) years on 14" and larger size tanks used for softener/filtration applications, subject to the manufacturer's conditions and/or the conditions shown below. Warranty does not cover exposure to weather, freezing, fractures caused by external impact, or exposure to vacuum.

-----Control Valves-----

The CWS control valve is warranted to be free of defects in materials and workmanship for a period of seven (7) years, subject to the manufacturer's conditions and/or the conditions shown below. Fleck & other brand control valves have 5-year warranty.

-----Conditions-----

1. This warranty only covers water conditioners installed for residential use. Water conditioners installed for commercial or industrial applications are guaranteed for one (1) year from the date of installation.
2. Installation must be made in accordance with legal or local codes and manufacturer's recommendations.
3. Failure must not result from exposure to weather, rodents, misuse, alteration, fire, lightning, power surges or neglect.
4. Water pressure must not exceed 100 PSI and water temperature must not exceed 100 degrees.
5. Subject to the above terms and conditions we will replace and/or repair, at our option, any parts of the water conditioner found defective in materials and workmanship. Defective parts must be returned, freight pre-paid for repair or replacement.
6. This warranty does not cover labor, shipping charges, damages caused by delays of consequential damages or other causes beyond our control. Warranty does not cover pipes, fixtures or appliances. Warranty extends to the actual water conditioner components only.
7. This warranty is to the original purchaser and is not transferable after the third year to any subsequent owner(s).
8. No other guarantees or warranty, expressed or implied, is applicable to our product. No repair or replacement made under the terms of the warranty shall extend this warranty.