

Valve Assembly

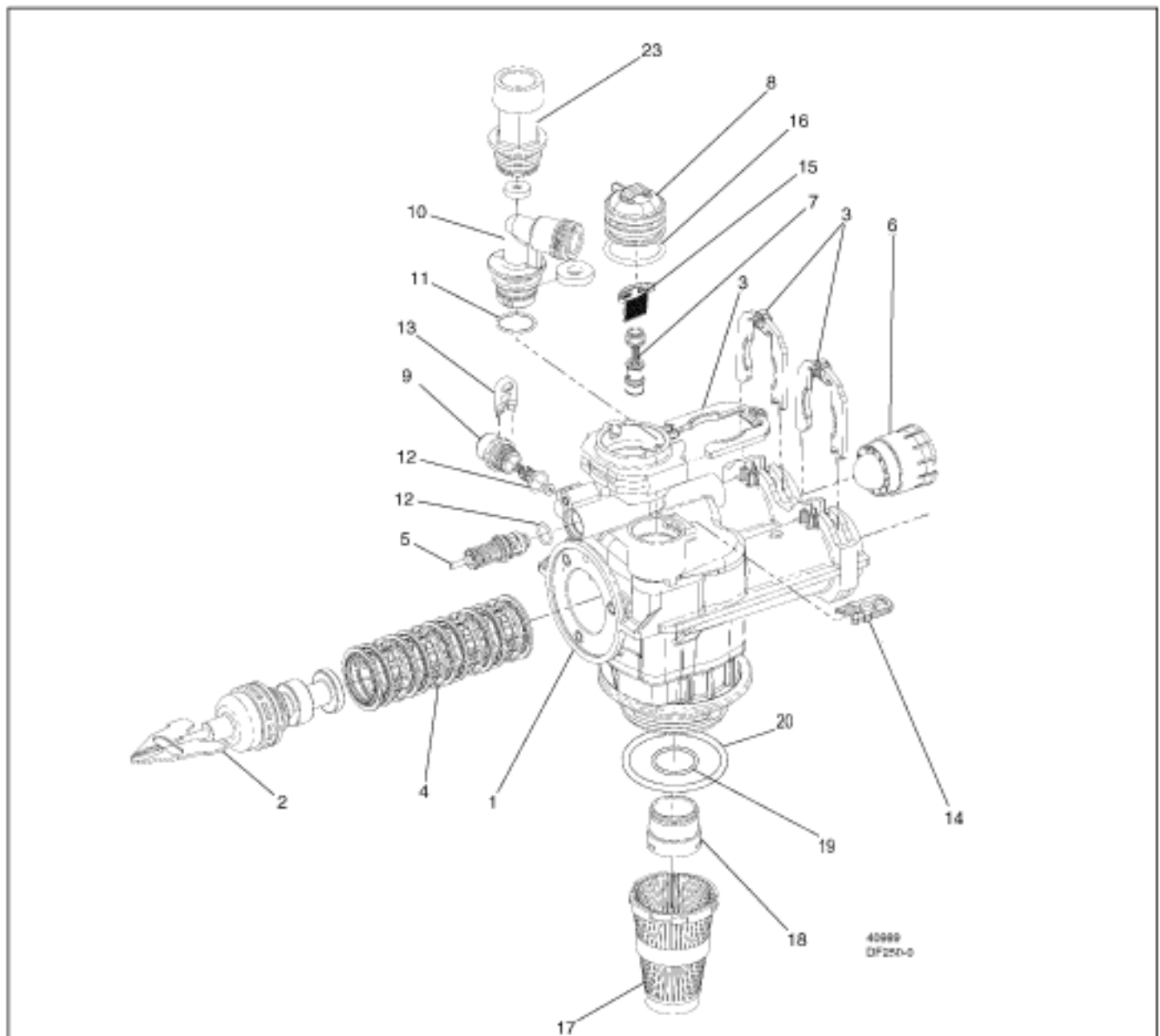


Figure 23: Valve Assembly

1. Shut off water or put system on bypass.
 2. Release water pressure by pressing the extra cycle button (or open up a hose bib or faucet to relase pressure in control valve if not on bypass).
 3. Pull red clip #3 out (small flat screw driver may be needed).
 4. Pry #8 Cap Injector out to reveal #15 injector screen, and #7 injector assembly.
 5. Remove injector screen and assembly with small screw driver (paper clip to pull out injector throat and nozzle may be needed) and clean in vinegar or muriatic acid.
 6. Reinstall above items, and test to make sure injector is drawing a vacuum by removing 3/8" black tubing from brine tank to control valve, at the opening #9.
 7. When control valve is in Cycle 2, (after the backwash cycle) the port at #9 should be sucking air or drawing brine if attached to perm tank.
 8. Clean brine tank float by removing and cleaning in citric acid, muriatic acid or vinegar.
- Any questions? Call us at 831-462-8500