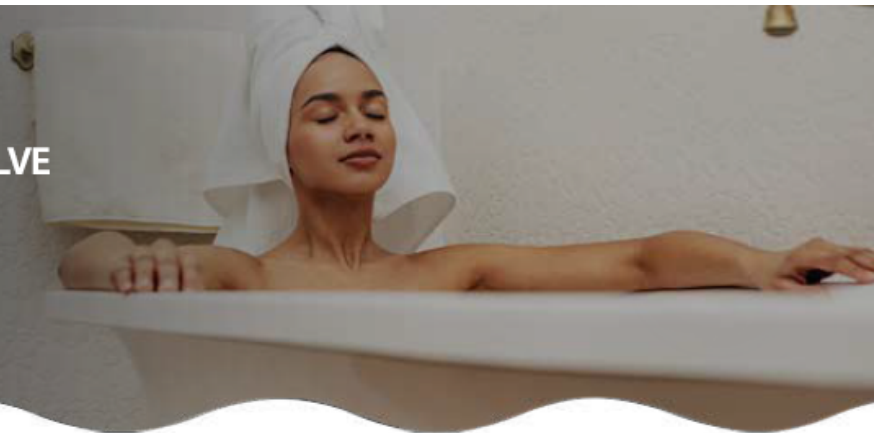


# RevV4

## CERAMIC DISC CONTROL VALVE

The most innovative and advanced water softening valve in the industry.



### Most advanced ceramic valve for residential and light commercial use.

The RevV4 features the most expandable and flexible valve on the market today. Ultimate performance and reliability are available from the patented ceramic disc design with (7) seven advanced programming options with fully adjustable cycles. This valve can utilize up-flow or down-flow regeneration to wash the media for a more efficient and effective cleaning.

Interlock features, signal outputs and twin-demand options are available to supply water 24/7. Advanced work modes are available with (4) four adjustable cycle sequences to achieve the exact configuration needed for your application.

### RevV4 Valve Features:

- Patented ceramic discs are corrosion and abrasion resistant for longer life and reduced maintenance.
- Multiple, programmable efficiency settings; grains exchanged per lb. of salt
- Bright, easy to read LCD display
- Long-term memory for program functions
- 72-hour memory backup
- No external PLC required to operate multiple control heads or external devices.



This valve is Tested and Certified by NSF International against NSF/ANSI Standard 44 for materials and structural integrity requirements.



# RevV4

## CERAMIC DISC CONTROL VALVE

All ceramic components guaranteed for life.



### Operational Specifications

Operational Pressure	Operational Water Temperature	Inlet Water Turbidity
20 - 120 psi	35°F - 125°F	<5NTU

### Control Valve Parameters

Inlet	Outlet	Drain	Brine	Base	Riser Tube	Hard Water Bypass
1"	1"	3/4"	3/8"	2.5"-8NPSM	32mm	Yes

Service @ 15 psi Drop	Peak Service @ 25 psi Drop
21 gpm	25.5 gpm

