

# Hydrogen Peroxide Systems for Well Water

## Enjoy Odor Free Water



[www.cleanwaterstore.com](http://www.cleanwaterstore.com)  
Clean Water Made Easy.

**Easily remove odors and tastes from water**

**Thoroughly oxidize and pre-treat for iron and manganese removal**

**Free expert assistance in sizing and choosing the right system**

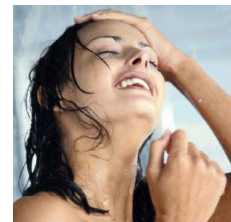
**Uses 1% up to 7% Peroxide for safe and easy peroxide injection**

**Peroxide not included. Sold separately.**

Now you can easily and precisely inject just the right amount of peroxide using the reliable J-PRO-22 pump.

Unlike most peroxide pumps the J-PRO-22 pump is totally self-priming and very low maintenance.

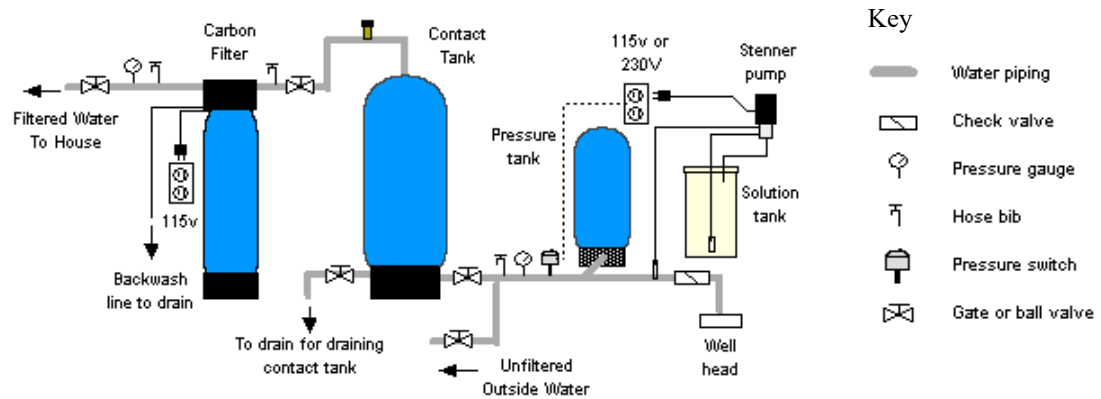
- Available for various well flow rates and applications
- Uses 1% to 7% hydrogen peroxide
- Very low maintenance
- Remove odors and oxidize iron with hydrogen peroxide
- Adds natural oxygen. No chlorine or chemical residuals
- Works over a wide range of water flow rates for most home water wells
- Good for well water flow rates from 1 to 50 Gallons Per Minute
- Pumps 0.1 to 22 gallons of solution per day
- Works for line pressures up to 100 PSI
- Dual Voltage: works on both 110v or 220v
- Low Power Consumption: Only uses 22 watts or 0.2 amps of power
- Metering pump can deliver up from 0.5 to 22 gallons of solution per day
- Dimensions: 15 gallon model: 14.5" wide x 24.5" height including pump (recommended for most applications)
- Dimensions: 35 gallon model: 18" wide x 37" height including pump.



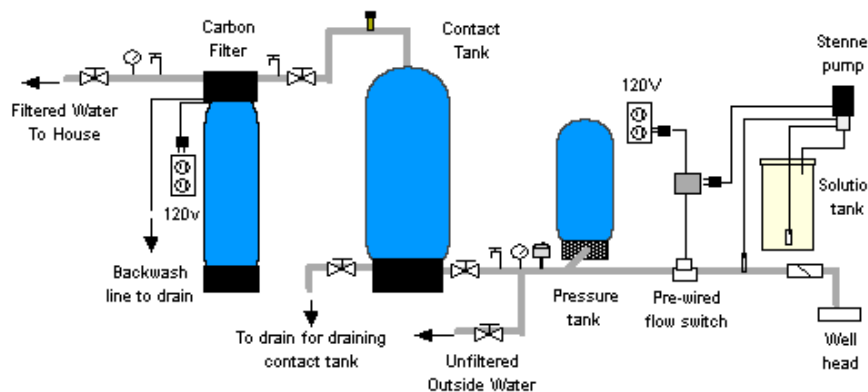
Call toll-free: 1-888-600-5426 Email us: [support@cleanwaterstore.com](mailto:support@cleanwaterstore.com)  
Clean Water Systems & Stores Inc 2806 Suite A Soquel Ave Santa Cruz CA 95062

## Three types of chlorine or peroxide injection to choose from: Standard, Flow Switch, or Proportional-Feed

**Standard Type:** In this type of installation, the Stenner pump is plugged into a dedicated electrical outlet that is wired in to the pressure switch. When the pressure switch points close, the Stenner chlorine solution pump is turned on. Lowest cost.



**Flow Switch Type:** An alternative to installing a dedicated outlet and wiring to the pressure switch, is to use a pre-wired flow switch. The flow switch cord is plugged into any 120V wall outlet, and the Stenner pump is plugged into the outlet that is built-in to the flow switch. Whenever there is flow, the Stenner pump is energized and starts to pump. Easy to wire, just plug in, turn on.



**Proportional-Feed Type:** In some applications the chlorine injection point must be after the pressure tank, such as when the pressure tank and well are away from the house and it's impractical to install the chlorine system at the well. In this case, a Proportional-Feed system can be used. Based on how fast the water is flowing more or less chlorine is pumped into the water maintaining a precise residual. Also very easy to install, and allows installation of your chlorination system anywhere after the well pressure tank or for community systems where it is not practical to install the injection point before the well pressure tank.

